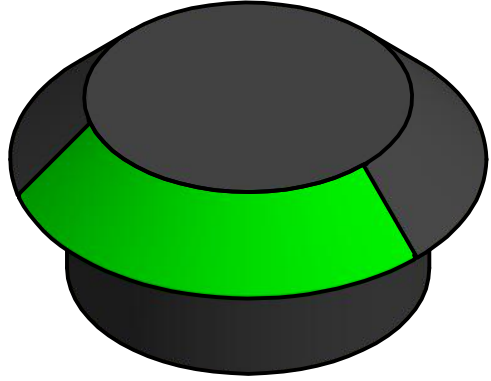
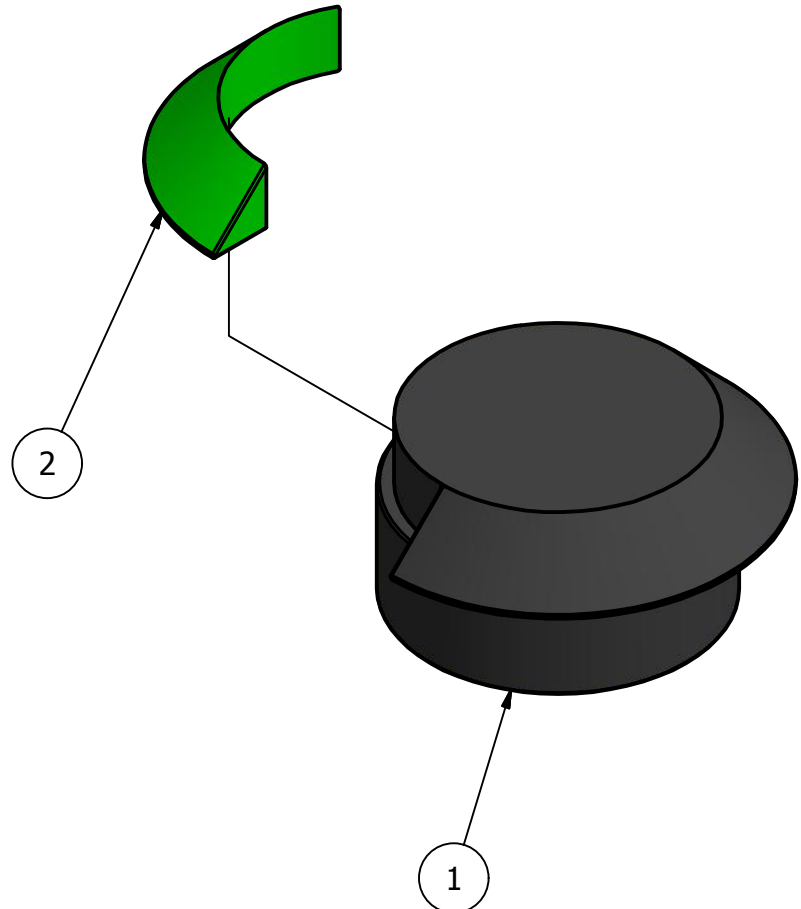


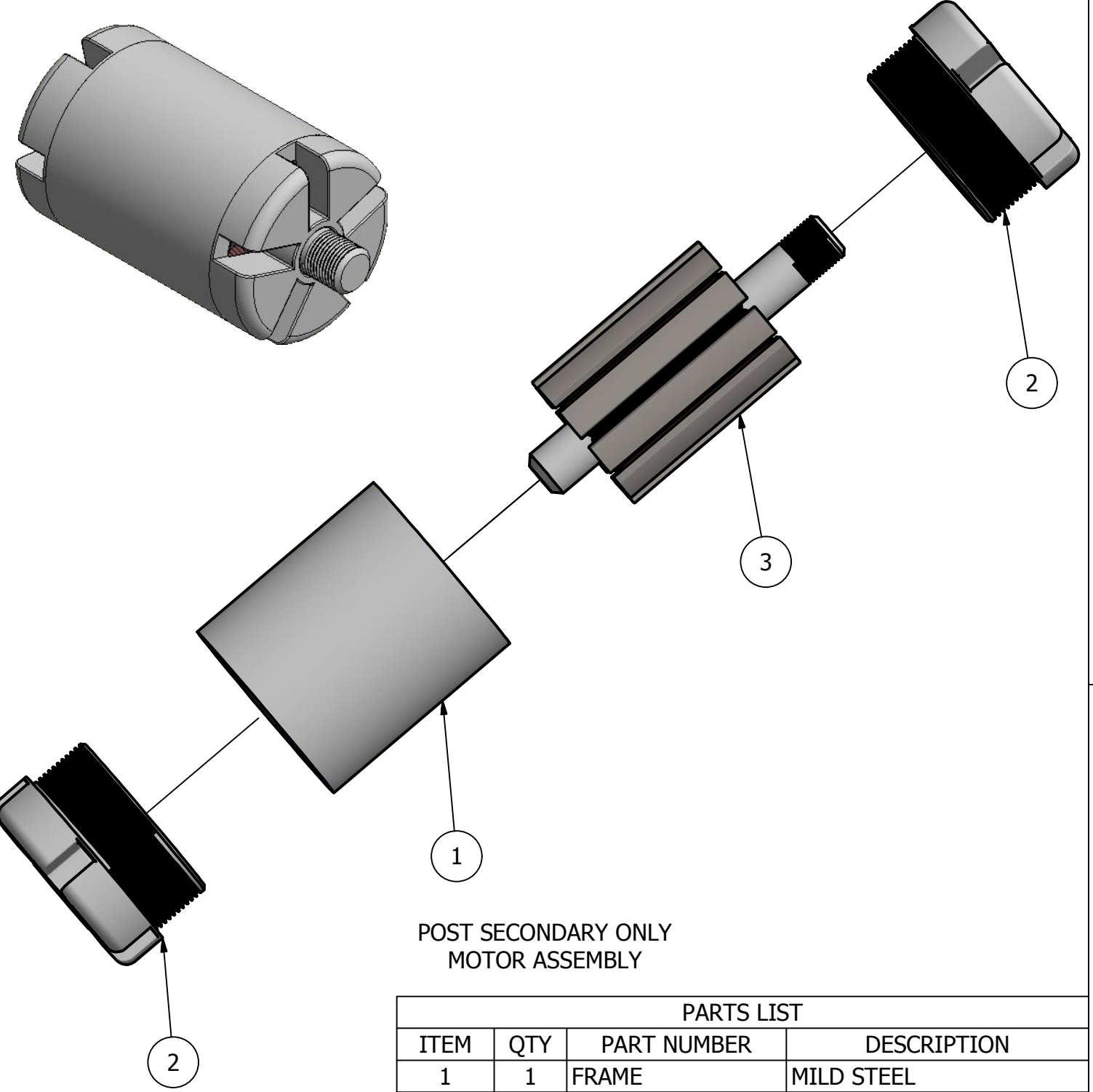
PARTS LIST			
ITEM	QTY	PART NUMBER	DESCRIPTION
1	1	BODY AND BATTERY	MULTI-BODY SOLID
2	1	LEFT FRONT ARM	CARBON FIBRE
3	1	RIGHT FRONT ARM	CARBON FIBRE
4	1	LEFT REAR ARM	CARBON FIBRE
5	1	RIGHT REAR ARM	CARBON FIBRE
6	4	LIGHT ASSEMBLY	SEE PAGE 2
7	4	MOTOR ASSEMBLY	SEE PAGE 2
8	4	PROPELLOR	ABS
9	2	STANDARD	ABS
10	2	PIN	ALUMINUM
11	1	BASE	ABS

<p>UNLESS OTHERWISE SPECIFIED DO NOT SCALE DRAWING INTERPRET DIMENSIONS AND TOLERANCES PER ASME Y14.5M-1994 DIMENSIONS ARE IN MILLIMETERS TOLERANCES APPLY AS SHOWN BELOW</p> <table> <tr><td>1 PL DEC</td><td>± 0.5</td></tr> <tr><td>2 PL DEC</td><td>± 0.2</td></tr> <tr><td>3 PL DEC</td><td>± 0.1</td></tr> <tr><td>4 PL DEC</td><td>± 0.05</td></tr> <tr><td>ANGLES</td><td>± .1°</td></tr> <tr><td>SURFACE ROUGHNESS</td><td>1.5 μ</td></tr> </table>		1 PL DEC	± 0.5	2 PL DEC	± 0.2	3 PL DEC	± 0.1	4 PL DEC	± 0.05	ANGLES	± .1°	SURFACE ROUGHNESS	1.5 μ	<p>PROPRIETARY NO PART OF THIS DOCUMENT MAY BE REPRODUCED, STORED IN A RETRIEVAL SYSTEM, OR TRANSMITTED IN ANY FORM, WITHOUT THE WRITTEN PERMISSION OF Skills Ontario</p>				<p>Mechanical CAD 2016</p>	
1 PL DEC	± 0.5																		
2 PL DEC	± 0.2																		
3 PL DEC	± 0.1																		
4 PL DEC	± 0.05																		
ANGLES	± .1°																		
SURFACE ROUGHNESS	1.5 μ																		
<p>THIRD ANGLE PROJECTION</p>		<p>CUSTOMER</p>		<p>PROJECT</p>		<p>GENERAL ASSEMBLY EXPLOSION</p>													
<p>DRAWN BY</p>		<p>DATE</p>		<p>SIZE</p>		<p>DRAWING NO</p>													
<p>CHECKED BY</p>		<p>DATE</p>		<p>B</p>		<p>REVISION</p>													
<p>APPROVED</p>		<p>DATE</p>		<p>SCALE</p>		<p>WEIGHT</p>													
				<p>NTS</p>		<p>lbs</p>													
<p>SHEET 1 OF 10</p>																			



POST SECONDARY ONLY
LIGHT ASSEMBLY

PARTS LIST			
ITEM	QTY	PART NUMBER	DESCRIPTION
1	1	LIGHT HOUSING	ABS
2	1	REFLECTOR	POLY CARBONATE

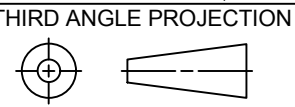


POST SECONDARY ONLY
MOTOR ASSEMBLY

PARTS LIST			
ITEM	QTY	PART NUMBER	DESCRIPTION
1	1	FRAME	MILD STEEL
2	2	END BRACKET	MILD STEEL
3	1	ARMATURE	COPPER/STEEL

UNLESS OTHERWISE SPECIFIED
DO NOT SCALE DRAWING
INTERPRET DIMENSIONS AND TOLERANCES
PER ASME Y14.5M-1994
DIMENSIONS ARE IN MILLIMETERS
TOLERANCES APPLY AS SHOWN BELOW

1 PL DEC	± 0.5
2 PL DEC	± 0.2
3 PL DEC	± 0.1
4 PL DEC	± 0.05
ANGLES	± .1°
SURFACE ROUGHNESS	1.5 μ



PROPRIETARY
NO PART OF THIS DOCUMENT MAY BE REPRODUCED,
STORED IN A RETRIEVAL SYSTEM, OR TRANSMITTED IN
ANY FORM, WITHOUT THE WRITTEN PERMISSION OF
Skills Ontario

CUSTOMER _____
PROJECT _____

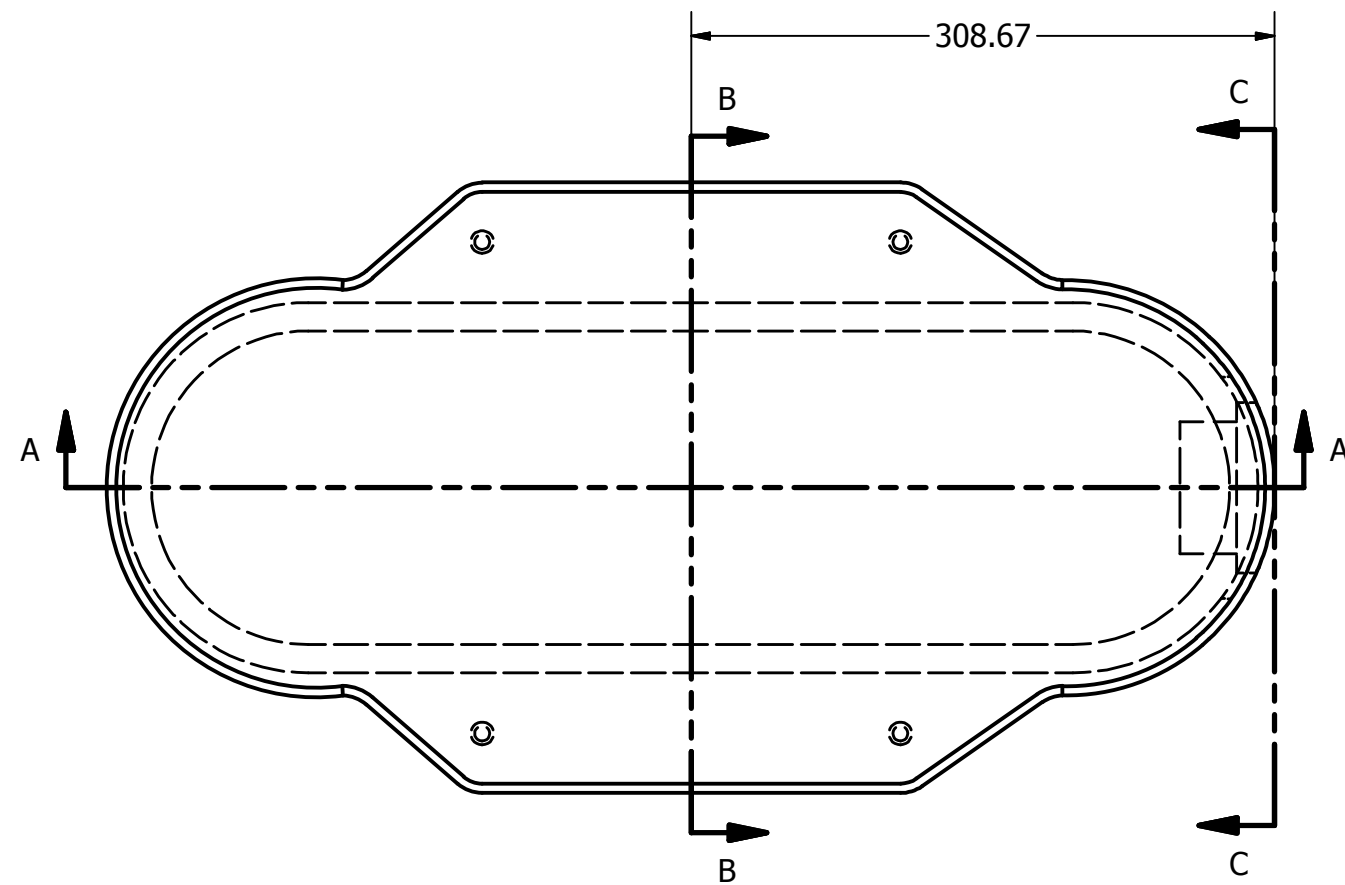
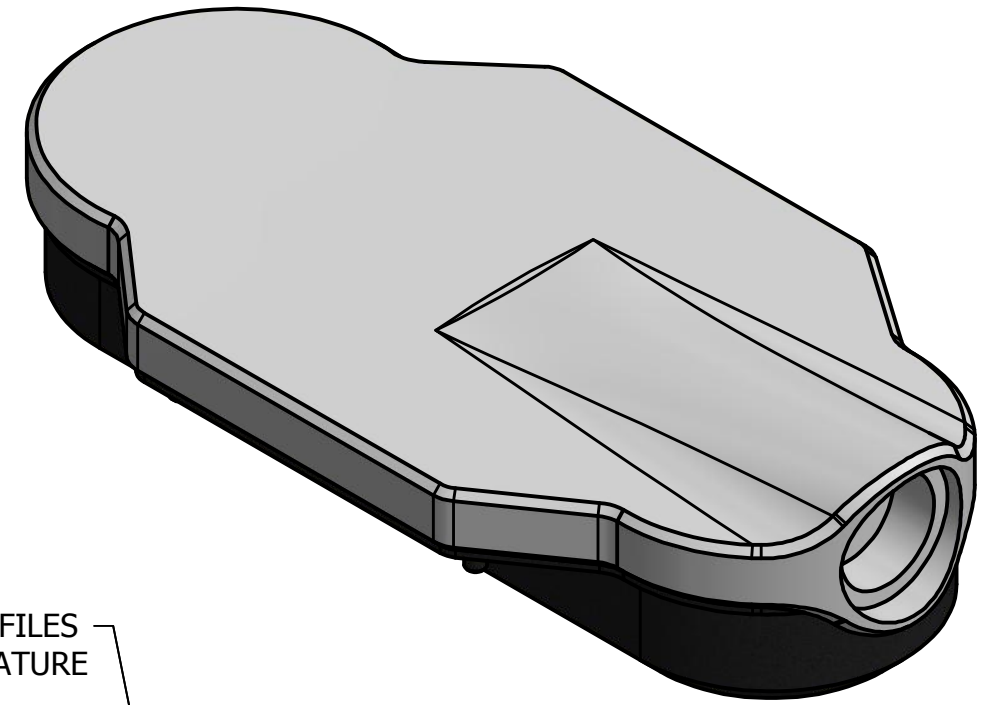
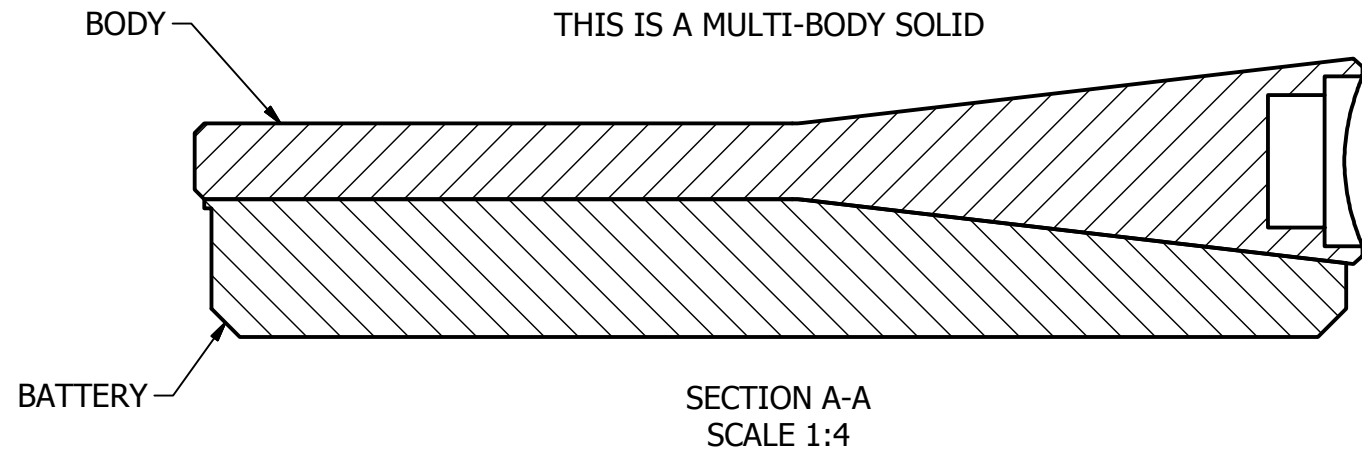
DRAWN BY _____ DATE _____
CHECKED BY _____ DATE _____
APPROVED _____ DATE _____

Mechanical CAD 2016

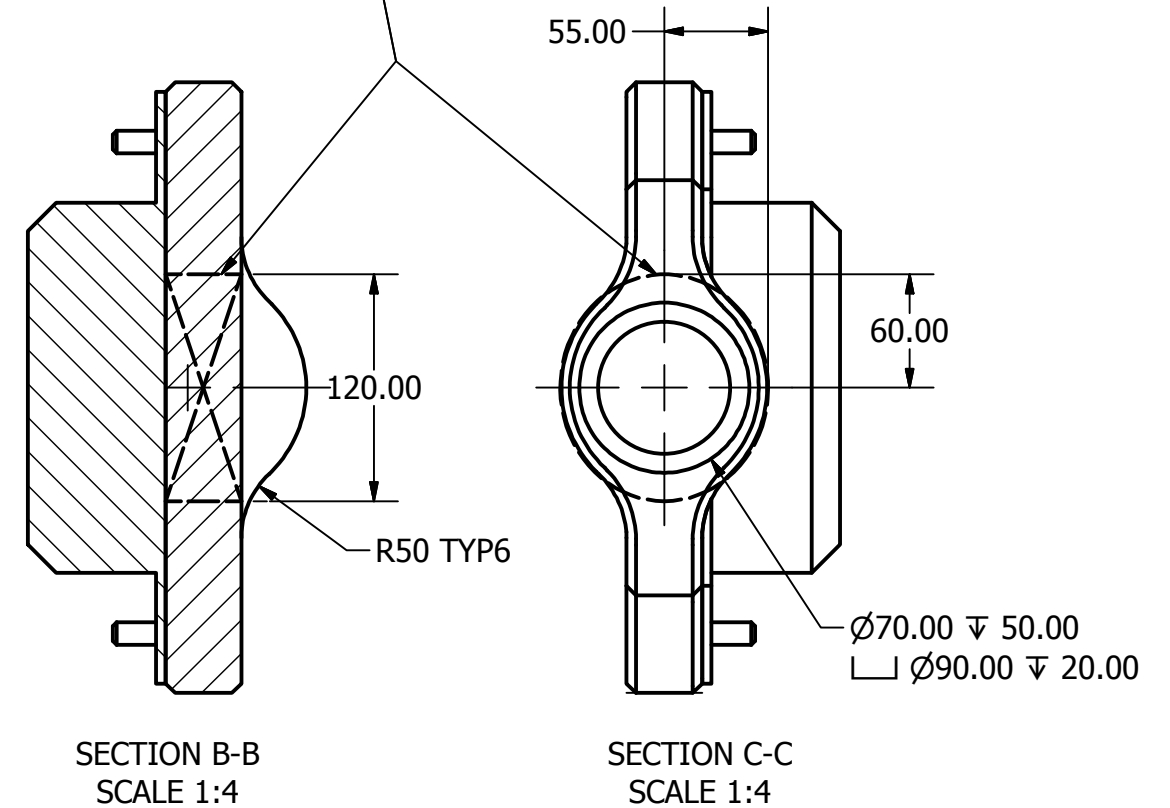
TITLE: **LIGHT ASSEMBLY AND MOTOR ASSEMBLY EXPLOSION**

SIZE: **B** DRAWING NO: _____ REVISION: **-**

SCALE: **NTS** WEIGHT: **lbs** SHEET **2** OF **10**

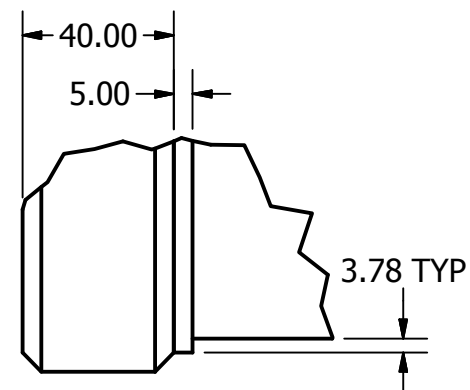
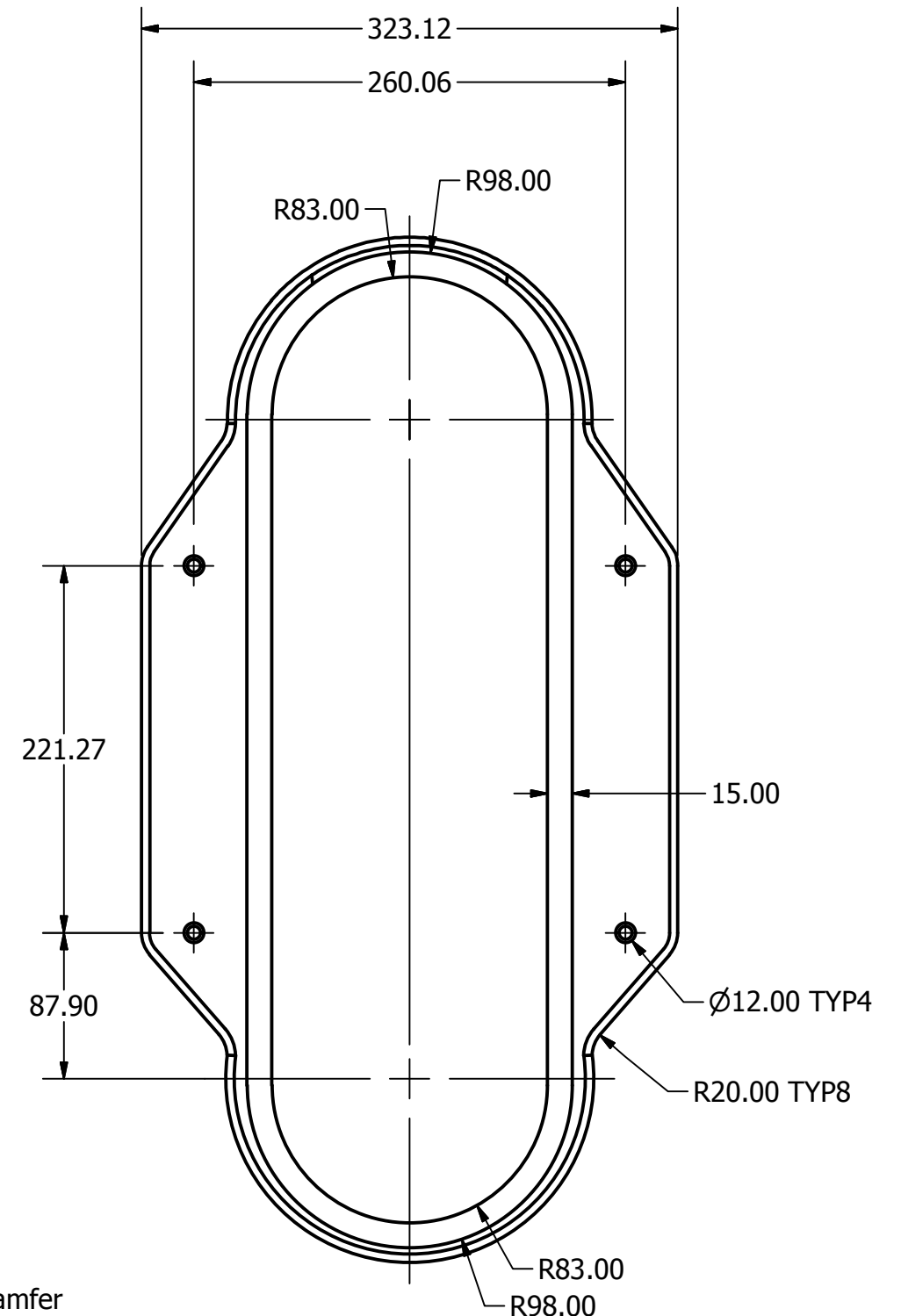
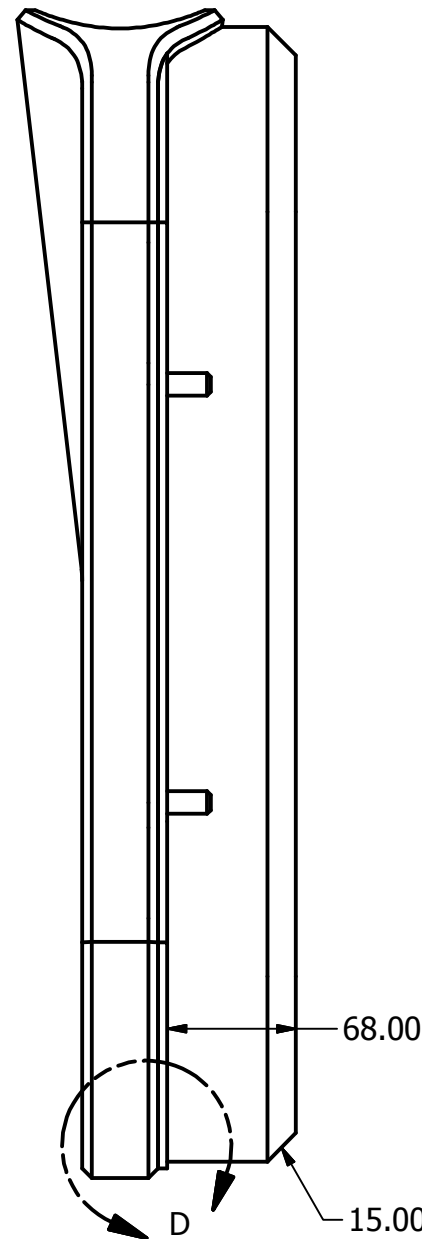
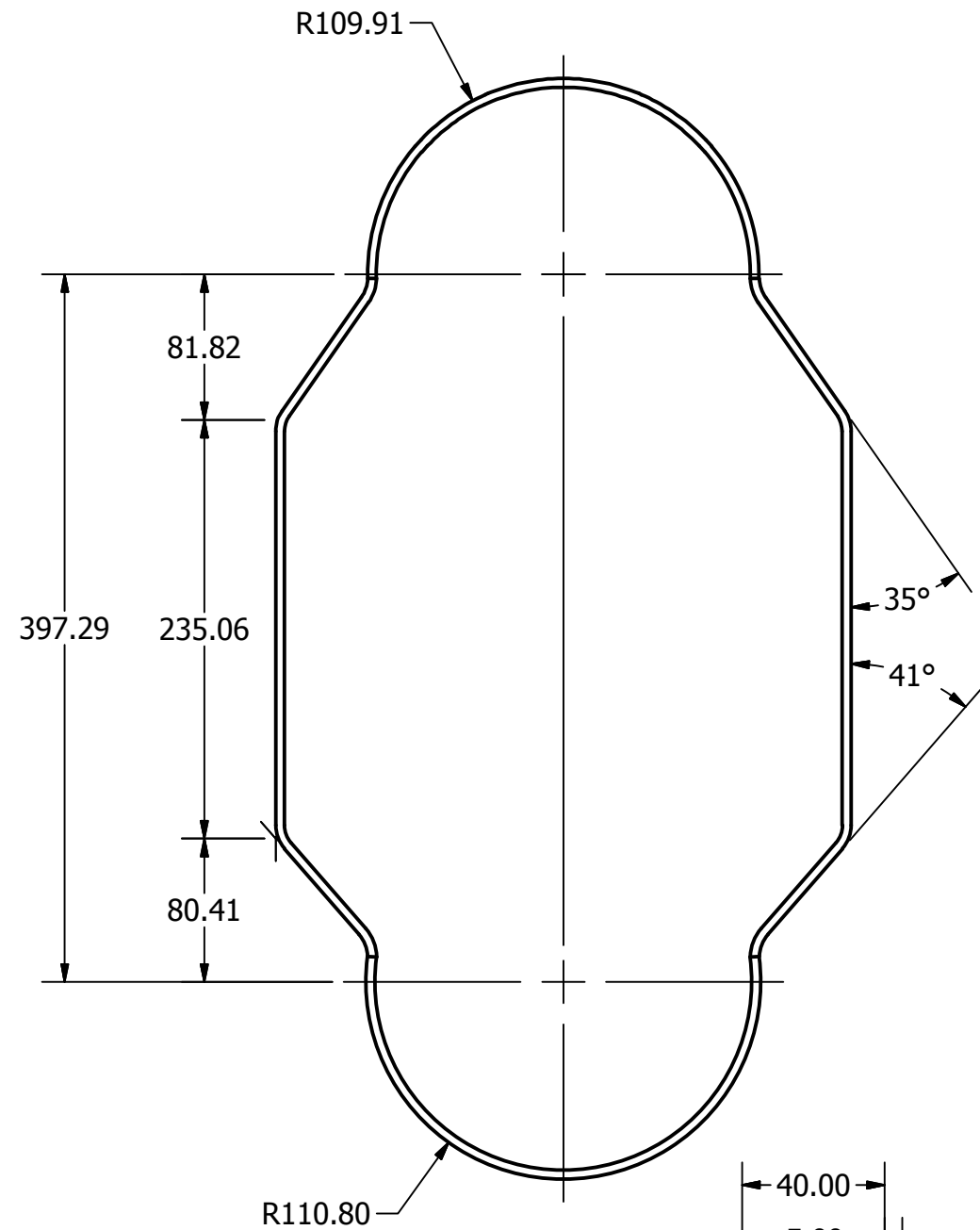


FLAT OUTER PROFILES
DEFINING 3D FEATURE



NOTES:
ALL UNSPECIFIED CHAMFERS TO BE 5MM
ALL UNSPECIFIED RADII TO BE 1MM

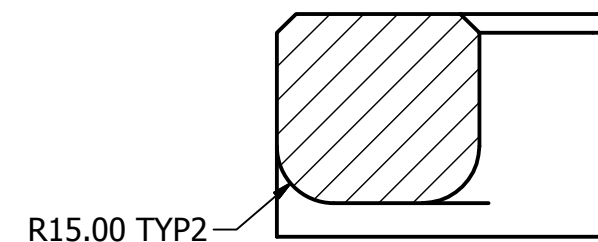
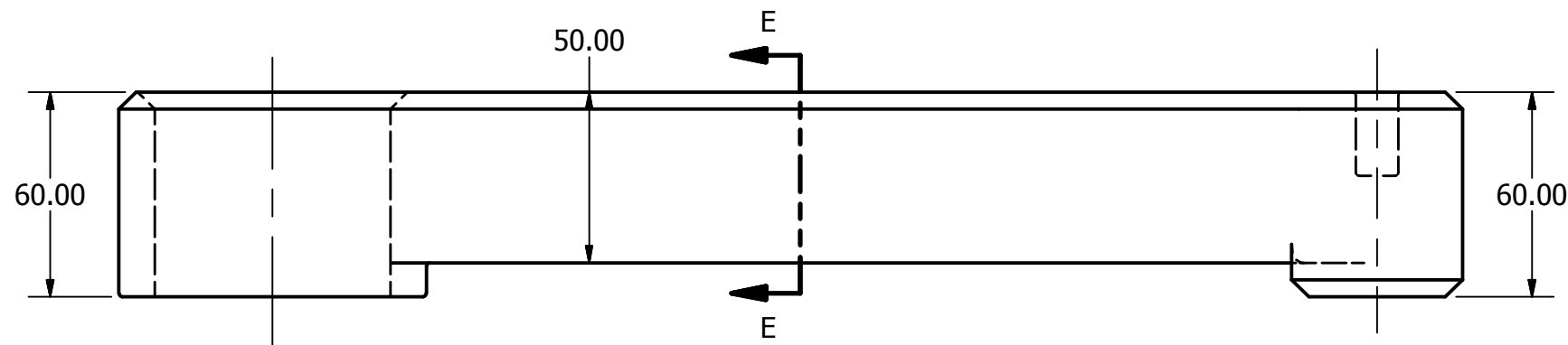
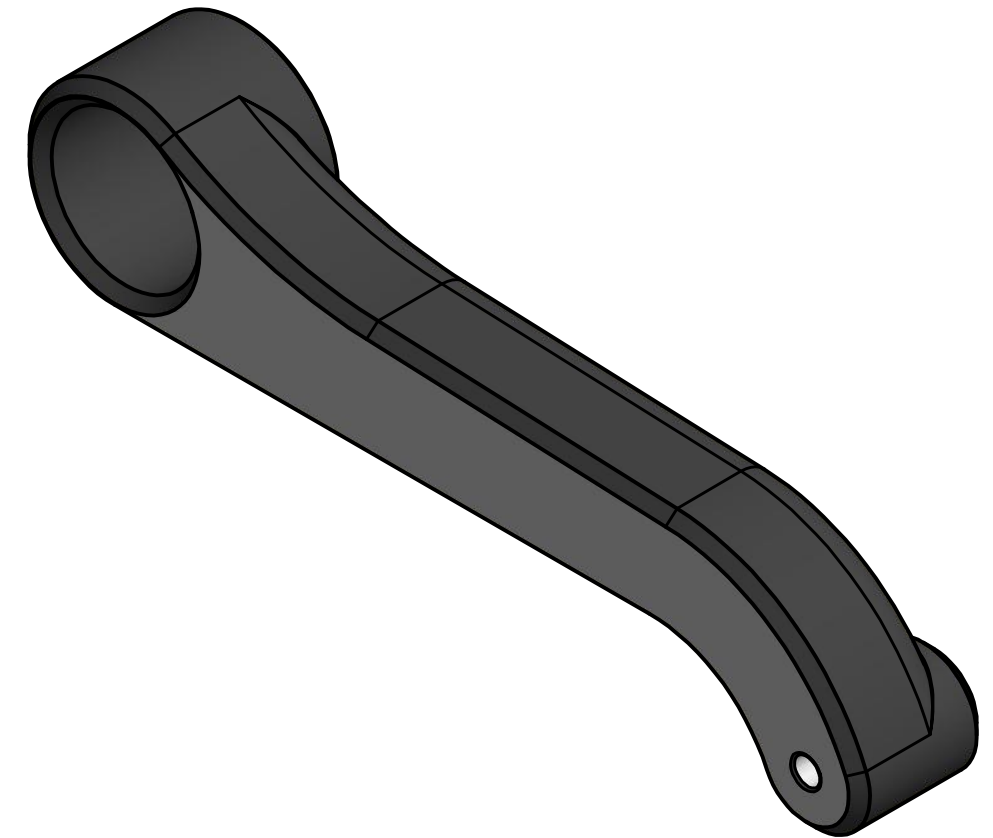
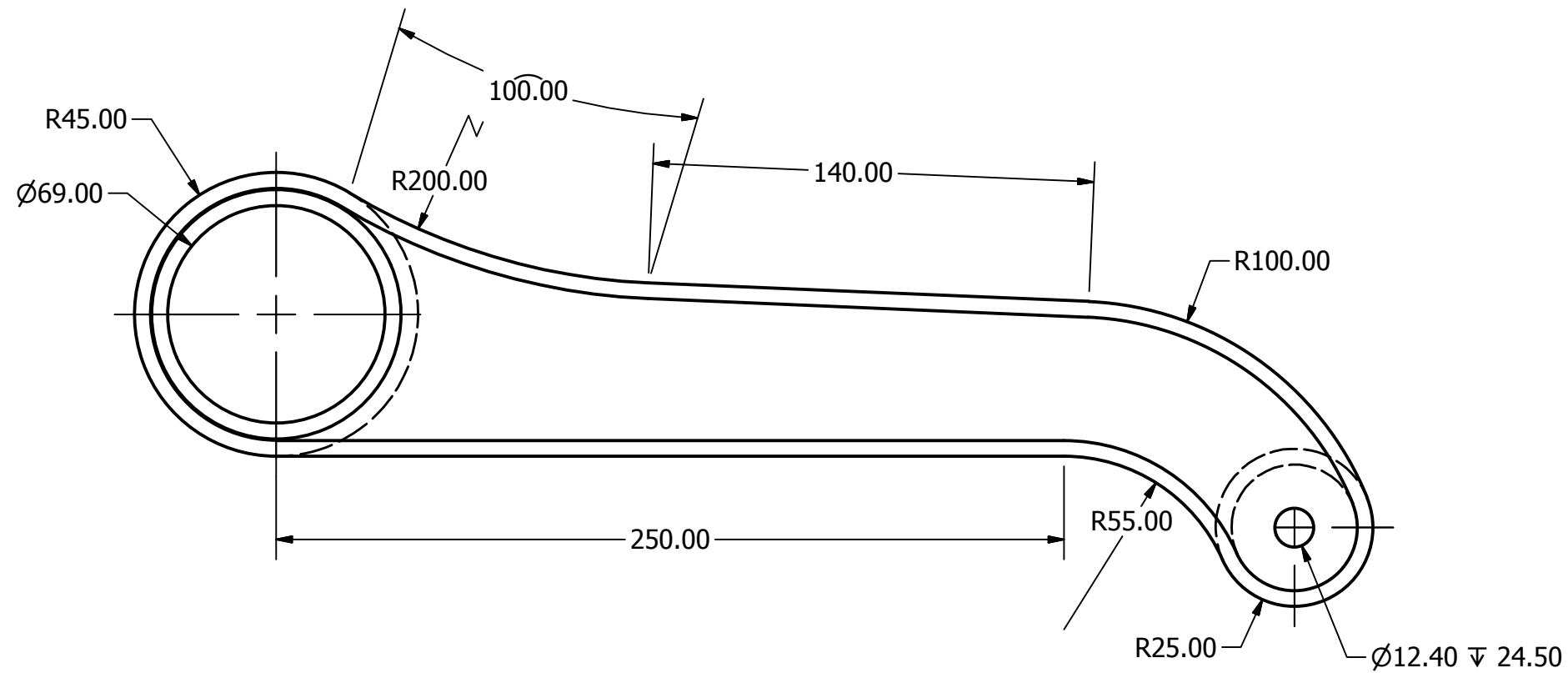
UNLESS OTHERWISE SPECIFIED DO NOT SCALE DRAWING INTERPRET DIMENSIONS AND TOLERANCES PER ASME Y14.5M-1994 DIMENSIONS ARE IN MILLIMETERS TOLERANCES APPLY AS SHOWN BELOW 1 PL DEC ± 0.5 2 PL DEC ± 0.2 3 PL DEC ± 0.1 4 PL DEC ± 0.05 ANGLES ± .1° SURFACE ROUGHNESS 1.5 µ				<p>PROPRIETARY</p> <p>NO PART OF THIS DOCUMENT MAY BE REPRODUCED, STORED IN A RETRIEVAL SYSTEM, OR TRANSMITTED IN ANY FORM, WITHOUT THE WRITTEN PERMISSION OF Skills Ontario</p>				<h2>Mechanical CAD 2016</h2>		
CUSTOMER		PROJECT		TITLE		PART ONE OF TWO - BODY AND BATTERY DETAIL				
DRAWN BY		DATE		SIZE		DRAWING NO				
CHECKED BY		DATE		SCALE		WEIGHT				
APPROVED		DATE		SCALE		1:4		lbs		REVISION
				B				-		SHEET3OF 10



DETAIL D
SCALE 1:2

NOTES:
ALL UNSPECIFIED CHAMFERS TO BE 5MM
ALL UNSPECIFIED RADII TO BE 1MM

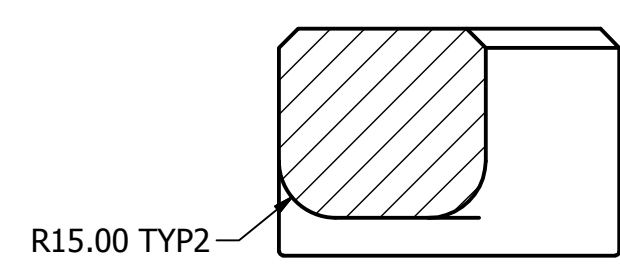
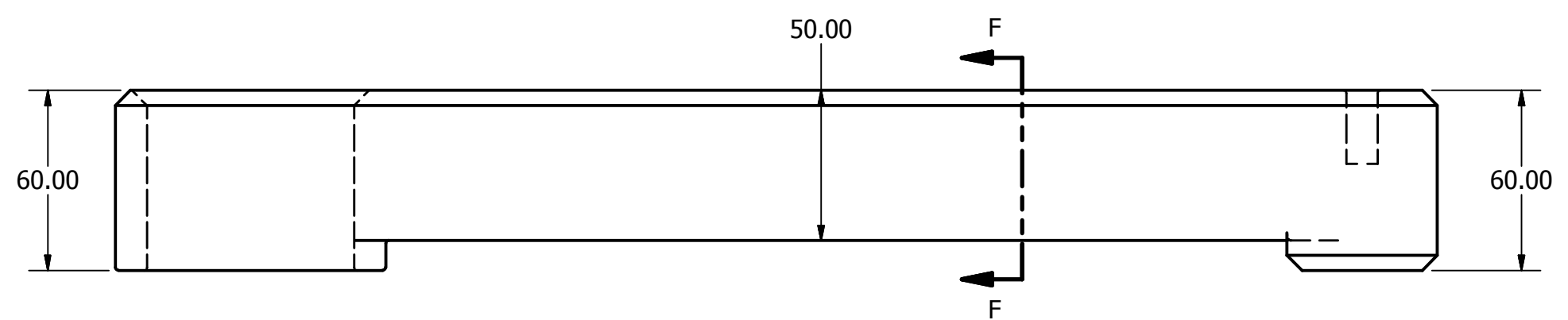
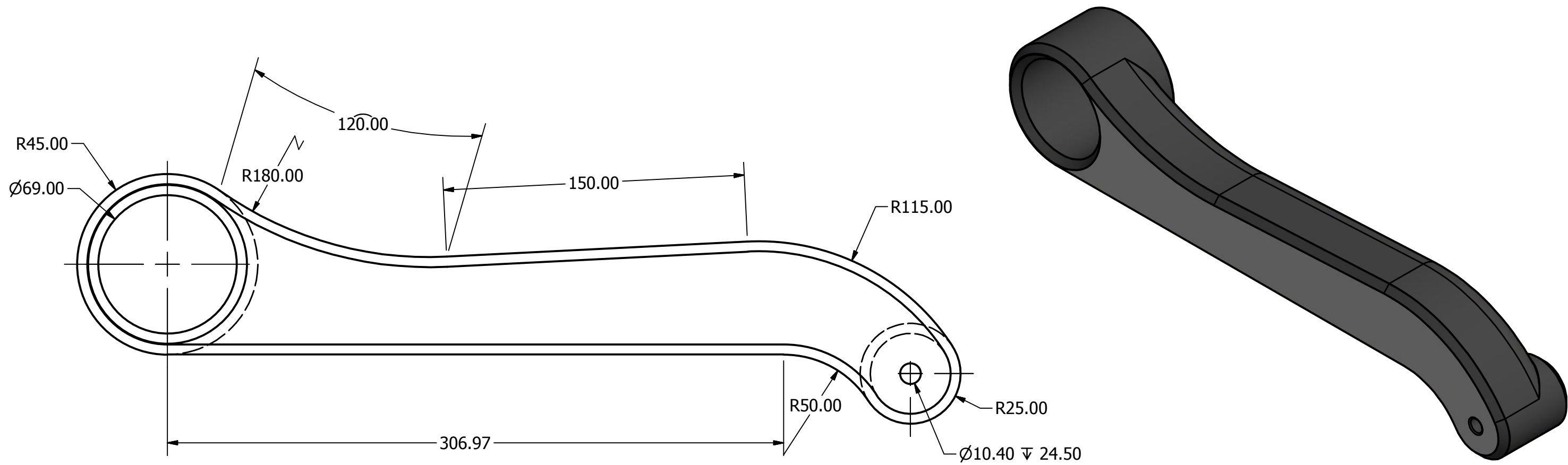
UNLESS OTHERWISE SPECIFIED DO NOT SCALE DRAWING INTERPRET DIMENSIONS AND TOLERANCES PER ASME Y14.5M-1994 DIMENSIONS ARE IN MILLIMETERS TOLERANCES APPLY AS SHOWN BELOW				Mechanical CAD 2016	
1 PL DEC ± 0.5 2 PL DEC ± 0.2 3 PL DEC ± 0.1 4 PL DEC ± 0.05 ANGLES ± .1° SURFACE ROUGHNESS 1.5 μ		PROPRIETARY NO PART OF THIS DOCUMENT MAY BE REPRODUCED, STORED IN A RETRIEVAL SYSTEM, OR TRANSMITTED IN ANY FORM, WITHOUT THE WRITTEN PERMISSION OF Skills Ontario		TITLE PART TWO OF TWO - BODY AND BATTERY DETAIL BODY (TOP) MATERIAL: PVC BATTERY (BOTTOM) MATERIAL: ABS/LITHIUM	
THIRD ANGLE PROJECTION		CUSTOMER	DATE	SIZE	DRAWING NO
		PROJECT	DATE	B	
DRAWN BY		APPROVED	DATE	SCALE	WEIGHT
				1:4	lbs
				REVISION	
				-	
					SHEET 4 OF 10



SECTION E-E
SCALE 1:2

NOTES:
 RIGHT FRONT ARM IS SYMMETRICAL TO THE LEFT FRONT ARM
 ALL UNSPECIFIED CHAMFERS TO BE 5MM
 ALL UNSPECIFIED RADII TO BE 1MM

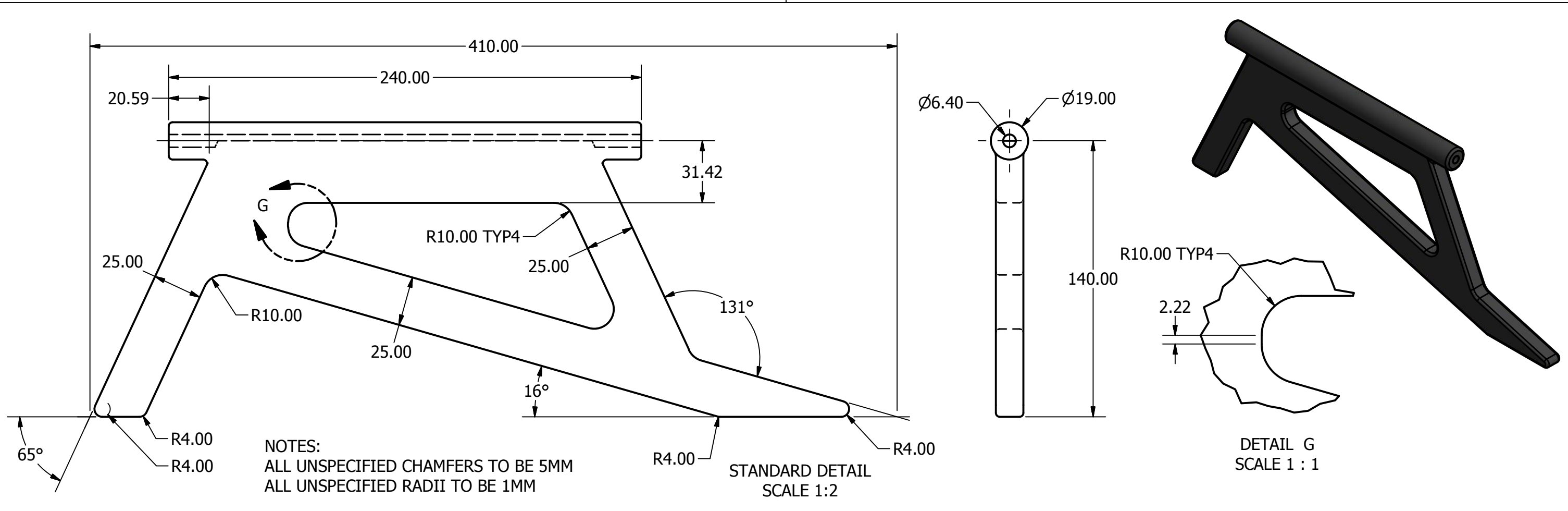
UNLESS OTHERWISE SPECIFIED DO NOT SCALE DRAWING INTERPRET DIMENSIONS AND TOLERANCES PER ASME Y14.5M-1994 DIMENSIONS ARE IN MILLIMETERS TOLERANCES APPLY AS SHOWN BELOW 1 PL DEC ± 0.5 2 PL DEC ± 0.2 3 PL DEC ± 0.1 4 PL DEC ± 0.05 ANGLES ± .1° SURFACE ROUGHNESS 1.5 µ	PROPRIETARY NO PART OF THIS DOCUMENT MAY BE REPRODUCED, STORED IN A RETRIEVAL SYSTEM, OR TRANSMITTED IN ANY FORM, WITHOUT THE WRITTEN PERMISSION OF Skills Ontario				Mechanical CAD 2016		
	CUSTOMER		LEFT FRONT ARM DETAIL (RIGHT FRONT ARM IS MIRRORED)				
	PROJECT		DRAWN BY	DATE	SIZE B	DRAWING NO	REVISION -
	THIRD ANGLE PROJECTION 		CHECKED BY	DATE	SCALE 1:2	WEIGHT lbs	SHEET5OF 10



SECTION F-F
SCALE 1:2

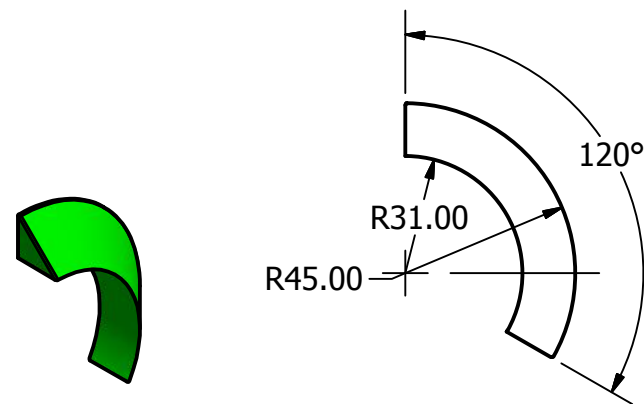
NOTES:
 RIGHT REAR ARM IS SYMETRICAL TO THE LEFT REAR ARM
 ALL UNSPECIFIED CHAMFERS TO BE 5MM
 ALL UNSPECIFIED RADII TO BE 1MM

UNLESS OTHERWISE SPECIFIED DO NOT SCALE DRAWING INTERPRET DIMENSIONS AND TOLERANCES PER ASME Y14.5M-1994 DIMENSIONS ARE IN MILLIMETERS TOLERANCES APPLY AS SHOWN BELOW				Mechanical CAD 2016	
1 PL DEC ± 0.5 2 PL DEC ± 0.2 3 PL DEC ± 0.1 4 PL DEC ± 0.05 ANGLES ± .1° SURFACE ROUGHNESS 1.5 μ		PROPRIETARY NO PART OF THIS DOCUMENT MAY BE REPRODUCED, STORED IN A RETRIEVAL SYSTEM, OR TRANSMITTED IN ANY FORM, WITHOUT THE WRITTEN PERMISSION OF Skills Ontario		TITLE LEFT REAR ARM DETAIL (RIGHT REAR ARM IS MIRRORED)	
THIRD ANGLE PROJECTION 		CUSTOMER	DATE	SIZE	DRAWING NO
		PROJECT	DATE	B	
		DRAWN BY	DATE	SCALE	WEIGHT
		CHECKED BY	DATE	1:2	lbs
		APPROVED	DATE		
					REVISION
					-
					SHEET 6 OF 10

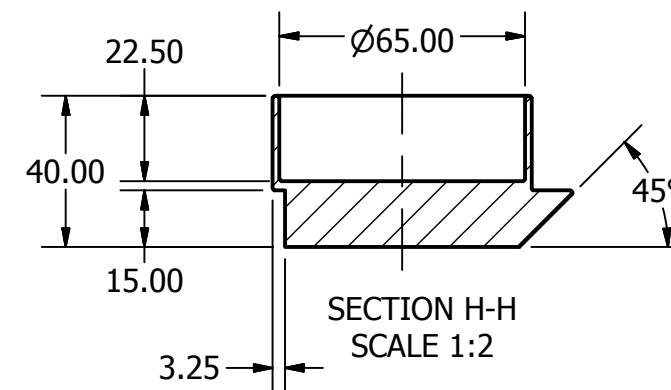
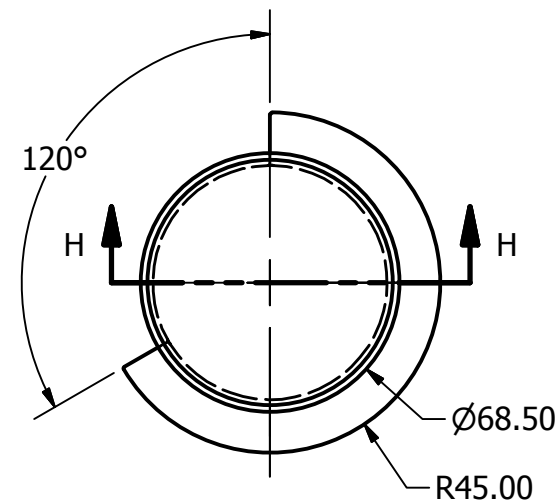
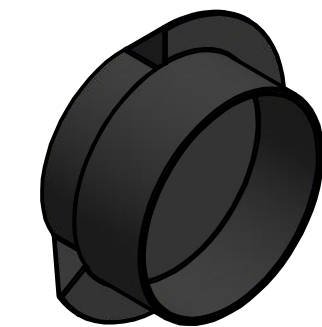


POST-SECONDARY ONLY

NOTES:
ALL UNSPECIFIED CHAMFERS TO BE 5MM
ALL UNSPECIFIED RADII TO BE 1MM



POST-SECONDARY ONLY



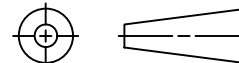
NOTES:
ALL UNSPECIFIED CHAMFERS TO BE 5MM
ALL UNSPECIFIED RADII TO BE 1MM

LIGHT HOUSING DETAIL
SCALE 1:2

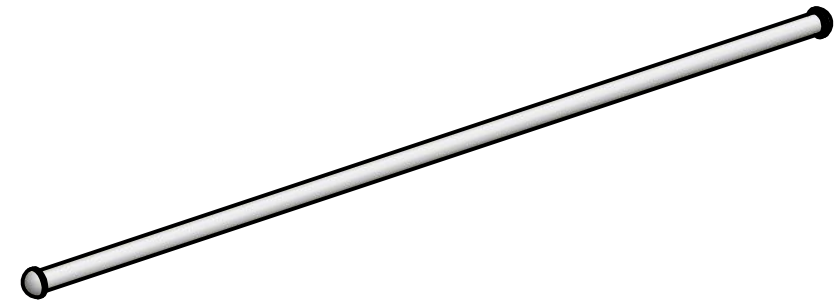
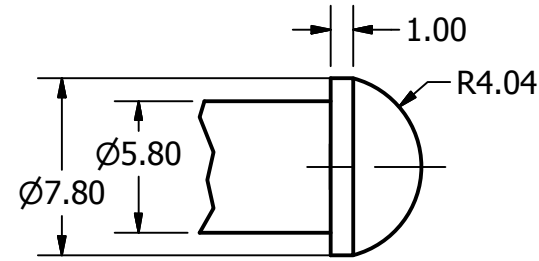
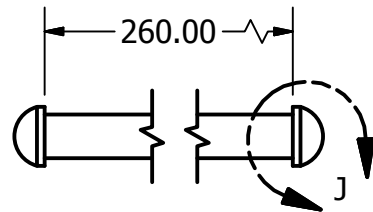
UNLESS OTHERWISE SPECIFIED
DO NOT SCALE DRAWING
INTERPRET DIMENSIONS AND TOLERANCES
PER ASME Y14.5M-1994
DIMENSIONS ARE IN MILLIMETERS
TOLERANCES APPLY AS SHOWN BELOW

1 PL DEC	± 0.5
2 PL DEC	± 0.2
3 PL DEC	± 0.1
4 PL DEC	± 0.05
ANGLES	± .1°
SURFACE ROUGHNESS	1.5 µ

THIRD ANGLE PROJECTION



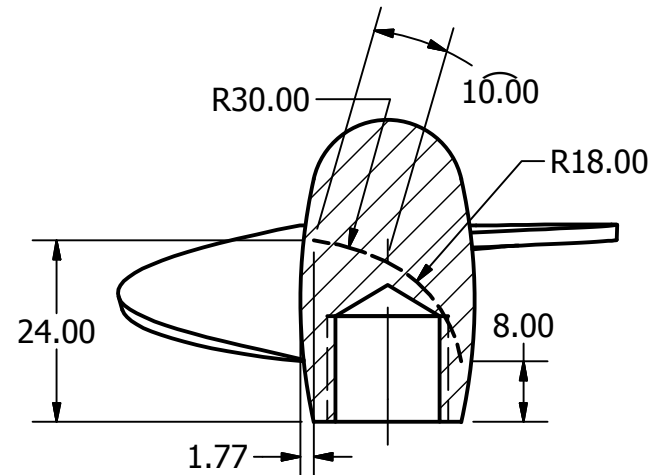
PROPRIETARY NO PART OF THIS DOCUMENT MAY BE REPRODUCED, STORED IN A RETRIEVAL SYSTEM, OR TRANSMITTED IN ANY FORM, WITHOUT THE WRITTEN PERMISSION OF Skills Ontario		SkillsCompétences Canada Ontario		Mechanical CAD 2016	
CUSTOMER		STANDARD, LENSE AND LIGHT HOUSING DETAILS			
PROJECT		DRAWN BY		DATE	REVISION
DRAWN BY		DATE		SIZE	DRAWING NO
CHECKED BY		DATE		B	
APPROVED		DATE		SCALE	WEIGHT
				NTS	lbs
					SHEET 7 OF 10



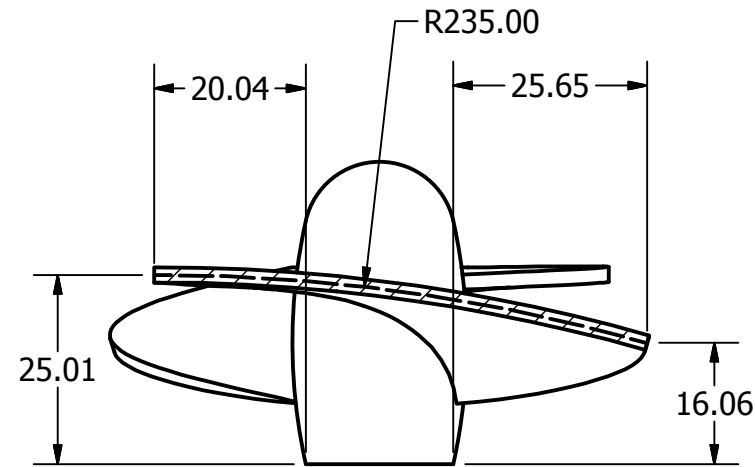
NOTES:
ALL UNSPECIFIED CHAMFERS TO BE 5MM
ALL UNSPECIFIED RADII TO BE 1MM

PIN DETAIL
SCALE 1:1
DETAIL J
SCALE 3:1

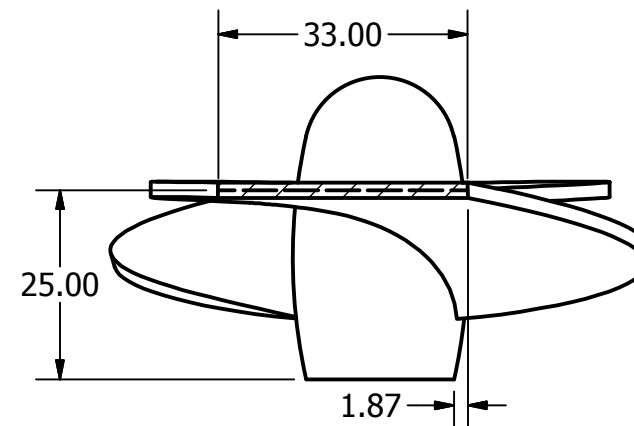
POST-SECONDARY ONLY



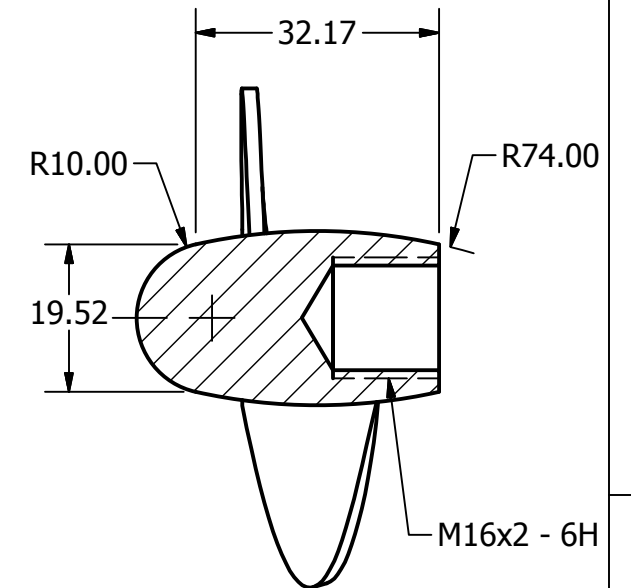
SECTION K-K
SCALE 1:1
DIMENSIONED PROFILE
INDICATES CENTER OF BLADE



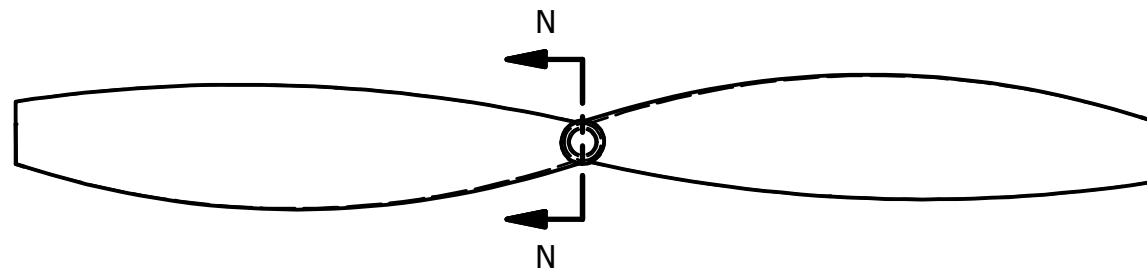
SECTION L-L
SCALE 1:1
DIMENSIONED PROFILE
INDICATES CENTER OF BLADE



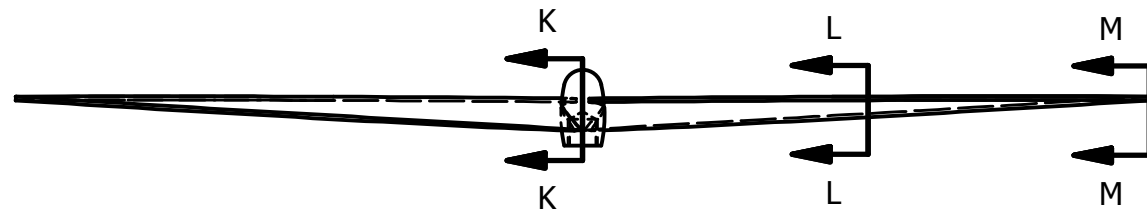
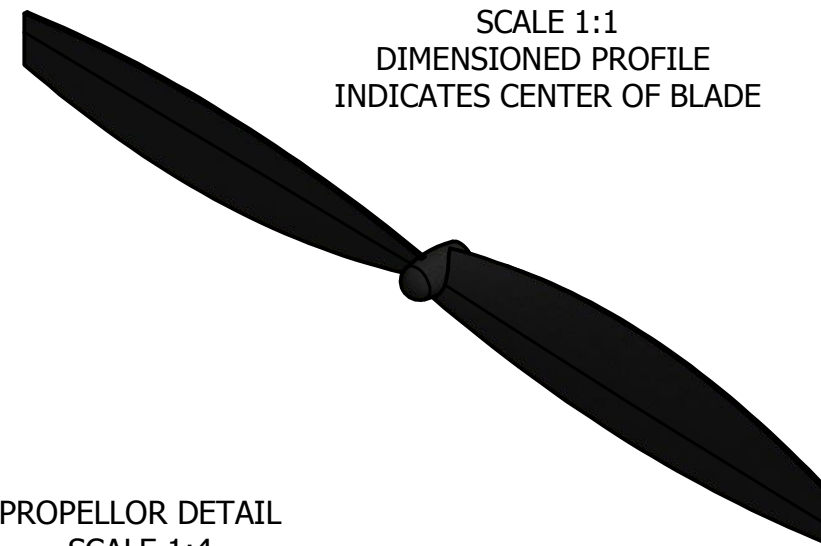
SECTION M-M
SCALE 1:1
DIMENSIONED PROFILE
INDICATES CENTER OF BLADE



SECTION N-N
SCALE 1:1



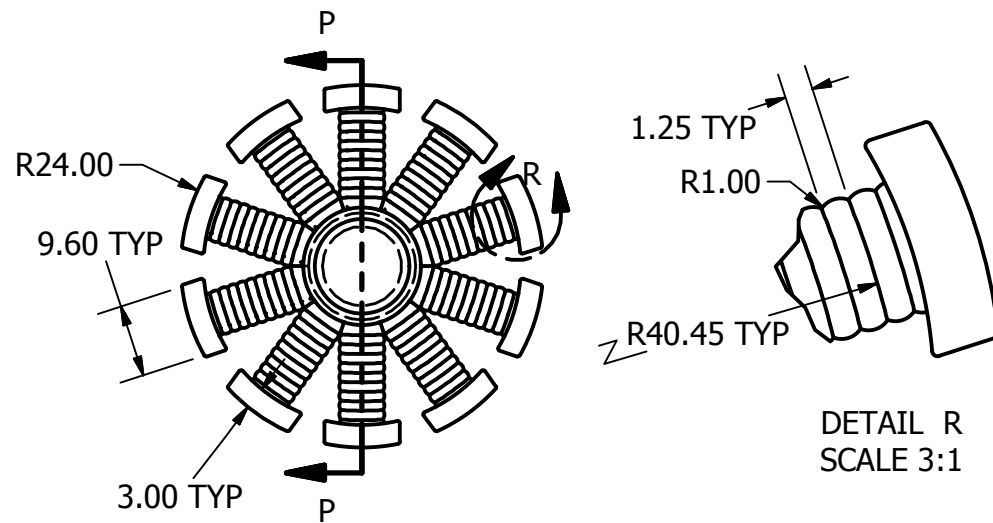
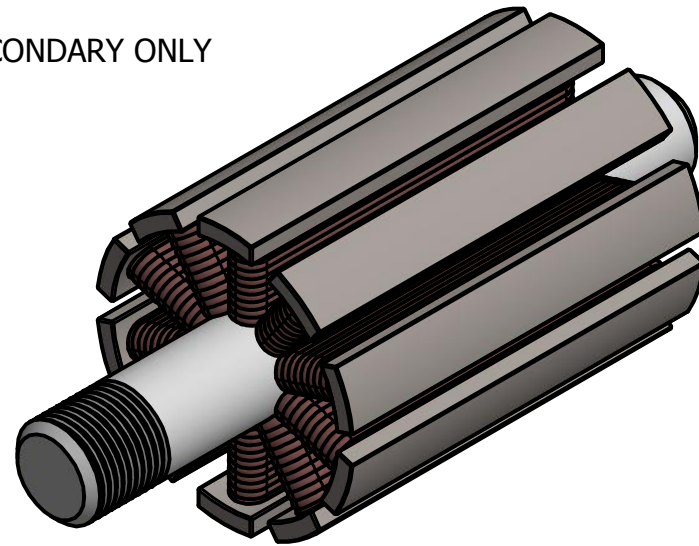
PROPELLOR DETAIL
SCALE 1:4



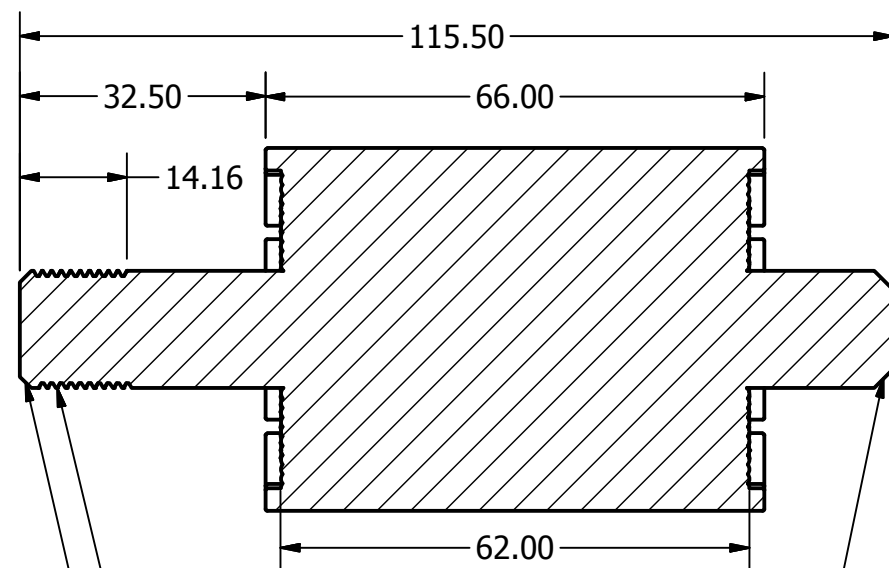
NOTES:
ALL UNSPECIFIED CHAMFERS TO BE 5MM
ALL UNSPECIFIED RADII TO BE 1MM

UNLESS OTHERWISE SPECIFIED DO NOT SCALE DRAWING INTERPRET DIMENSIONS AND TOLERANCES PER ASME Y14.5M-1994 DIMENSIONS ARE IN MILLIMETERS TOLERANCES APPLY AS SHOWN BELOW		PROPRIETARY NO PART OF THIS DOCUMENT MAY BE REPRODUCED, STORED IN A RETRIEVAL SYSTEM, OR TRANSMITTED IN ANY FORM, WITHOUT THE WRITTEN PERMISSION OF Skills Ontario		SkillsCompétences Canada Ontario		Mechanical CAD 2016	
TOLERANCES APPLY AS SHOWN BELOW		CUSTOMER		TITLE		PIN AND PROPELLOR DETAILS	
1 PL DEC ± 0.5		PROJECT		DRAWN BY		DATE	
2 PL DEC ± 0.2		DRAWN BY		CHECKED BY		DATE	
3 PL DEC ± 0.1		DRAWN BY		APPROVED		DATE	
4 PL DEC ± 0.05		DRAWN BY		DATE		SIZE	
ANGLES ± .1°		DRAWN BY		DATE		DRAWING NO	
SURFACE ROUGHNESS 1.5 μ		DRAWN BY		DATE		SCALE	
THIRD ANGLE PROJECTION		DRAWN BY		DATE		WEIGHT	
		DRAWN BY		DATE		REVISION	
		DRAWN BY		DATE		-	
		DRAWN BY		DATE		NTS	
		DRAWN BY		DATE		lbs	
		DRAWN BY		DATE		SHEET 8 OF 10	

POST-SECONDARY ONLY



DETAIL R
SCALE 3:1

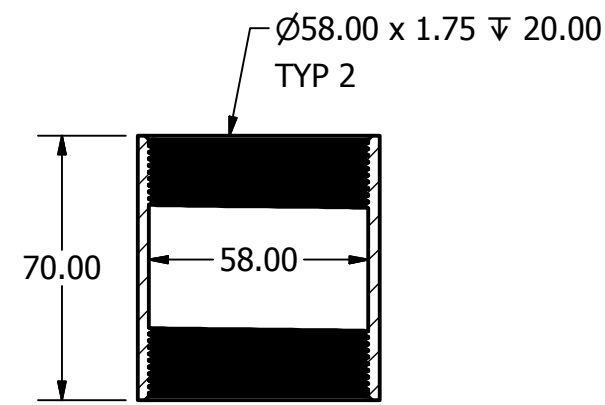
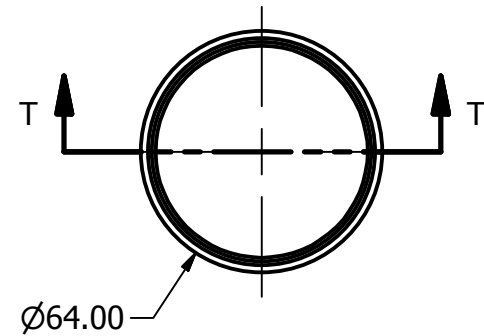
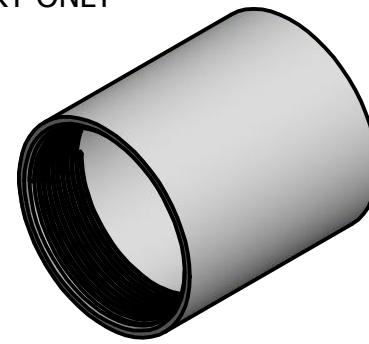


SECTION P-P
SCALE 1:1

ARMATURE DETAIL
SCALE 1:1

NOTES:
ALL UNSPECIFIED CHAMFERS TO BE 5MM
ALL UNSPECIFIED RADII TO BE 1MM

POST-SECONDARY ONLY

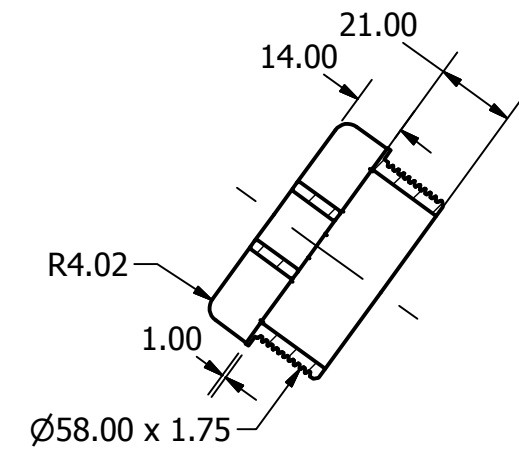
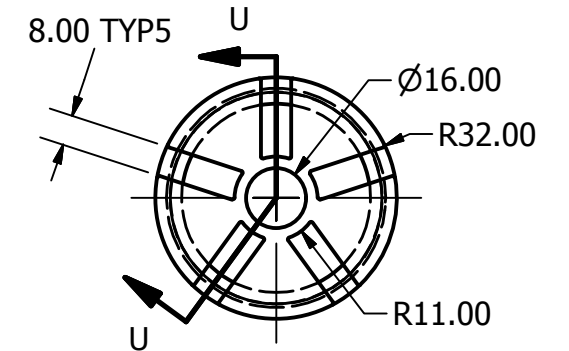
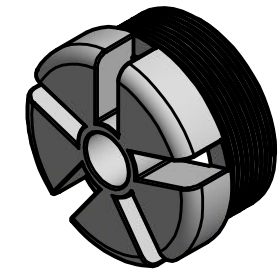


SECTION T-T
SCALE 1:2

MOTOR HOUSING DETAIL
SCALE 1:2

NOTES:
ALL UNSPECIFIED CHAMFERS TO BE 5MM
ALL UNSPECIFIED RADII TO BE 1MM

POST-SECONDARY ONLY

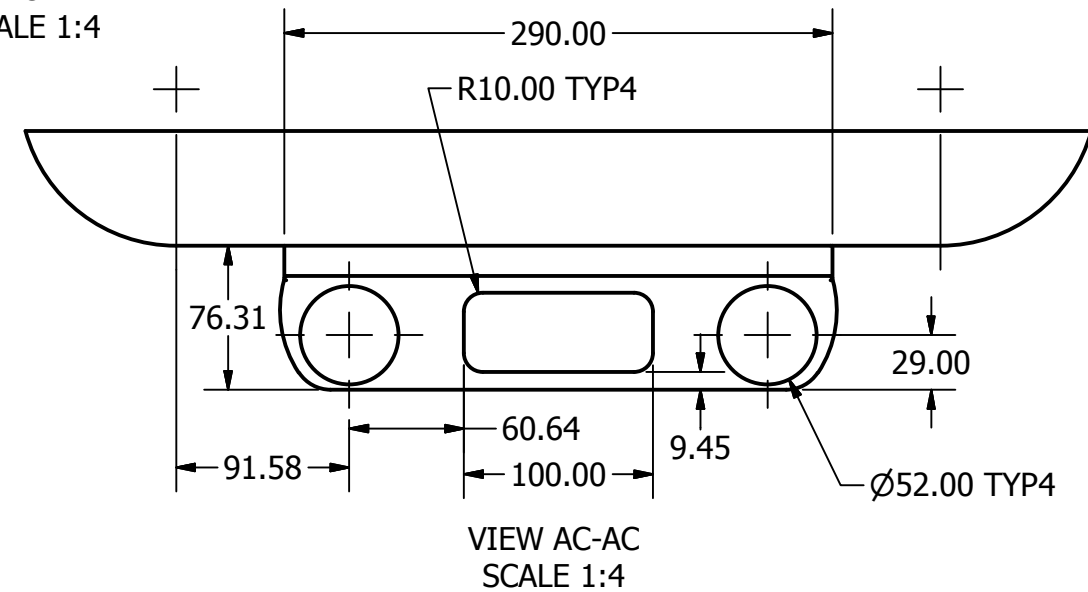
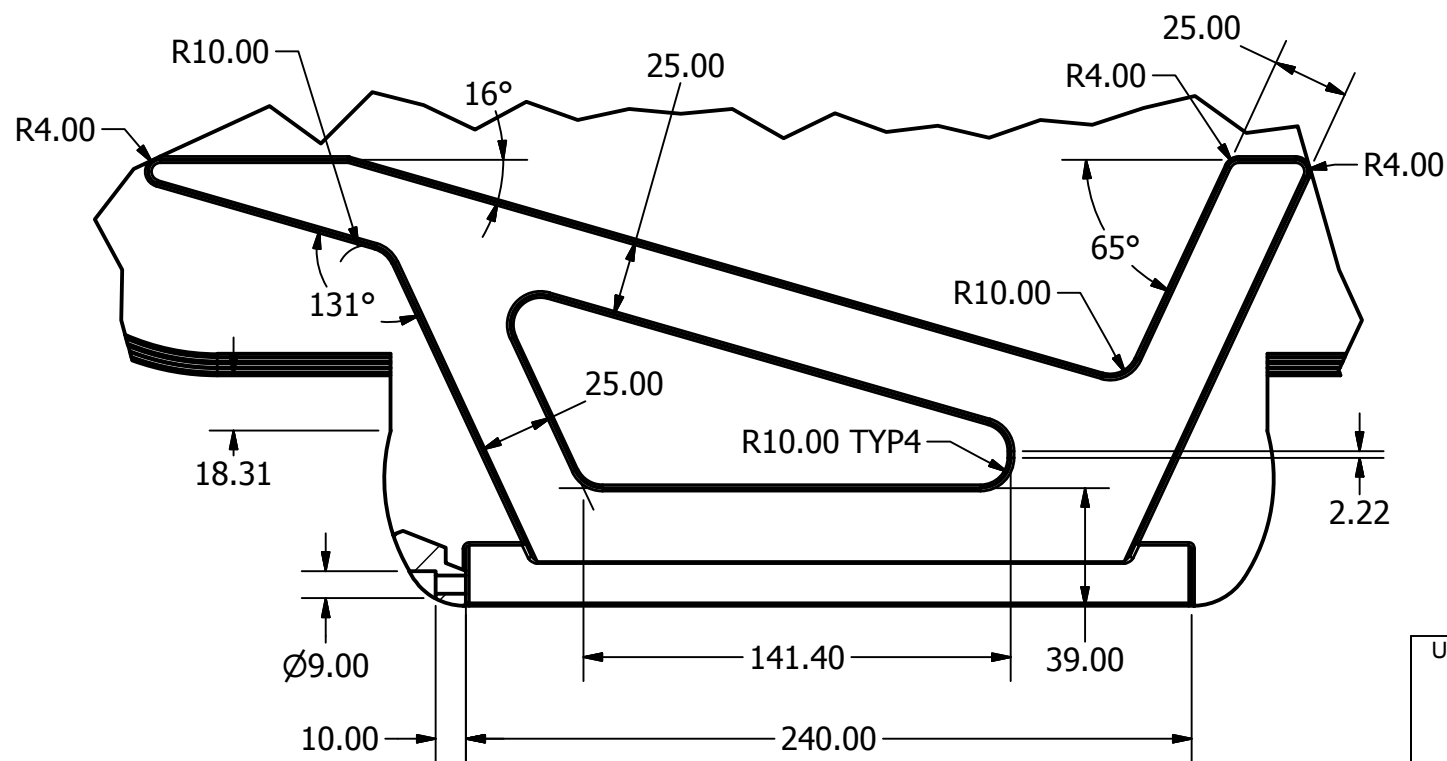
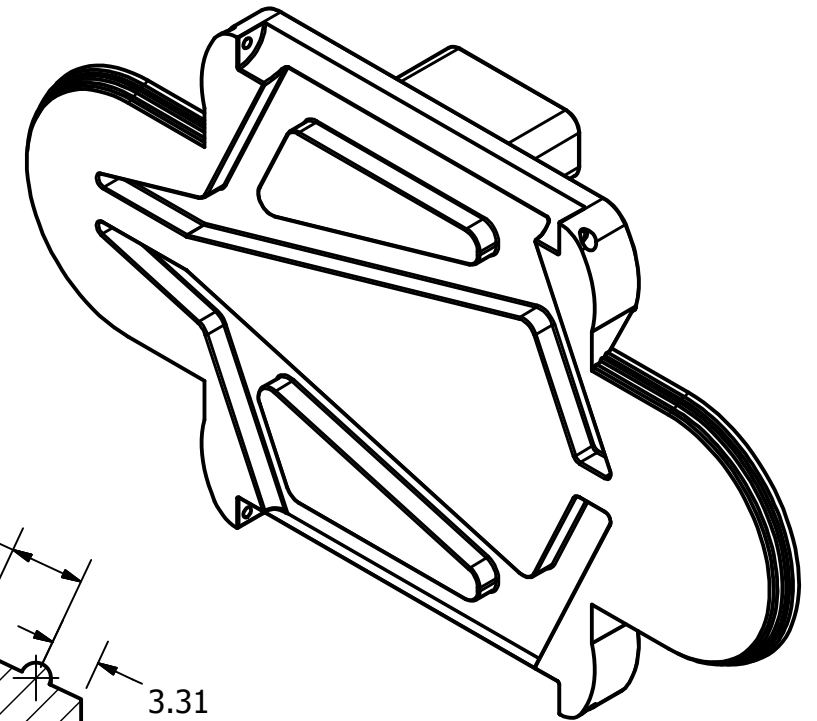
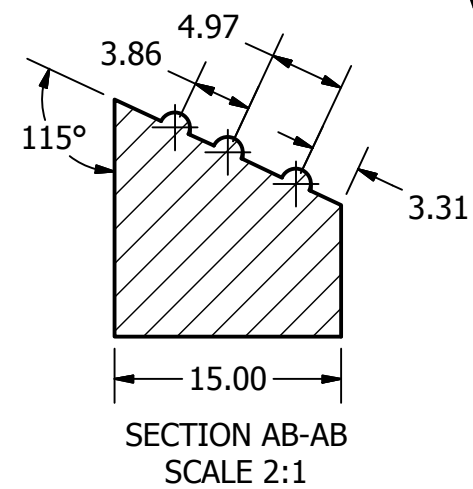
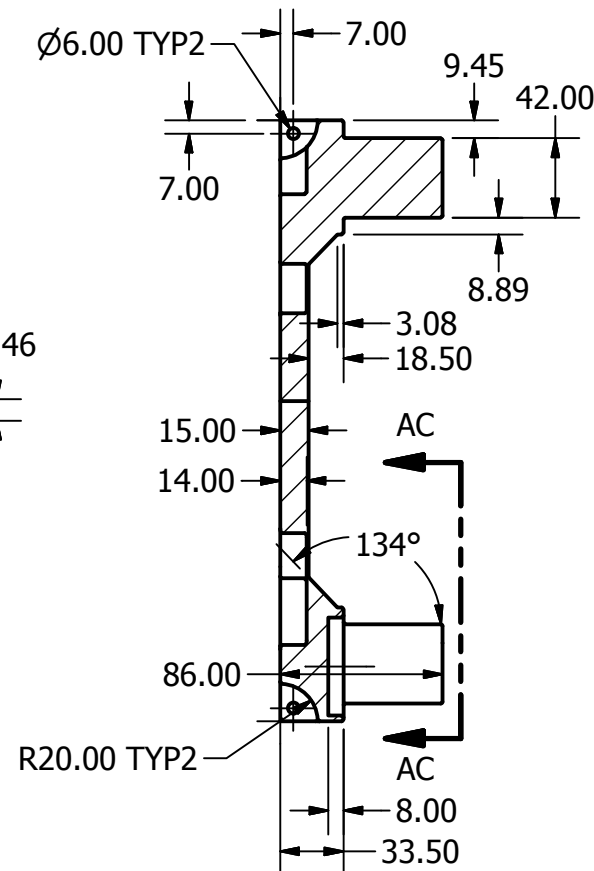
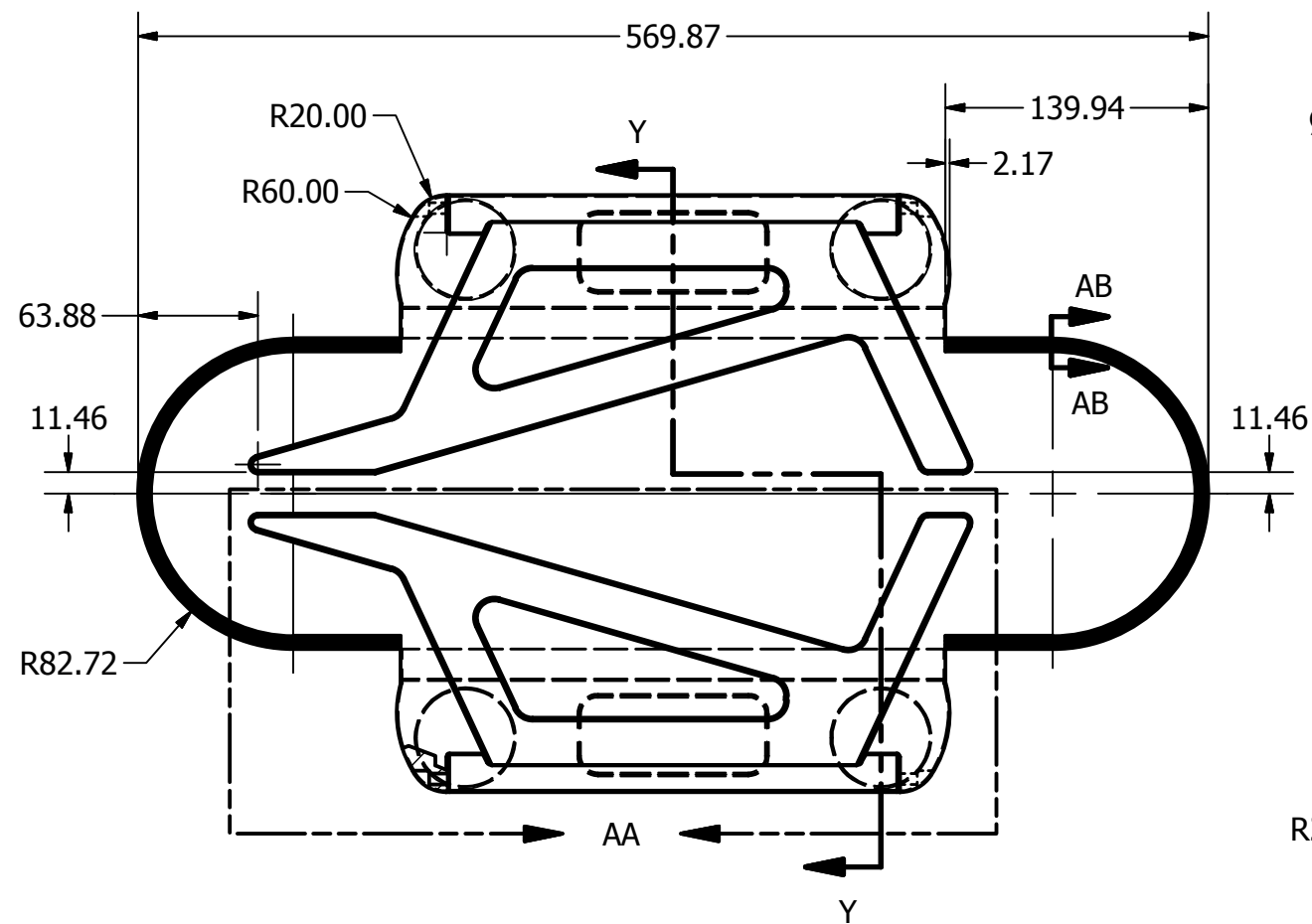


SECTION U-U
SCALE 1:2

END BRACKET DETAIL
SCALE 1:2

NOTES:
ALL UNSPECIFIED CHAMFERS TO BE 5MM
ALL UNSPECIFIED RADII TO BE 1MM

UNLESS OTHERWISE SPECIFIED DO NOT SCALE DRAWING INTERPRET DIMENSIONS AND TOLERANCES PER ASME Y14.5M-1994 DIMENSIONS ARE IN MILLIMETERS TOLERANCES APPLY AS SHOWN BELOW		PROPRIETARY NO PART OF THIS DOCUMENT MAY BE REPRODUCED, STORED IN A RETRIEVAL SYSTEM, OR TRANSMITTED IN ANY FORM, WITHOUT THE WRITTEN PERMISSION OF Skills Ontario		SkillsCompétences Canada Ontario		Mechanical CAD 2016	
1 PL DEC ± 0.5 2 PL DEC ± 0.2 3 PL DEC ± 0.1 4 PL DEC ± 0.05 ANGLES ± .1° SURFACE ROUGHNESS 1.5 µ		CUSTOMER		TITLE PIN AND PROPELLOR DETAILS		REVISION	
THIRD ANGLE PROJECTION		DRAWN BY		DATE		SIZE B	
		CHECKED BY		DATE		DRAWING NO	
		APPROVED		DATE		SCALE NTS	
				WEIGHT lbs		SHEET 9 OF 10	



NOTES:
 ALL UNSPECIFIED FILLETS TO BE 1MM
 PART IS SYMMETRICAL IN THE X AND Y AXIIS

DETAIL AA
 SCALE NTS

SECTION Y-Y
 SCALE 1:4

SECTION AB-AB
 SCALE 2:1

VIEW AC-AC
 SCALE 1:4

UNLESS OTHERWISE SPECIFIED DO NOT SCALE DRAWING INTERPRET DIMENSIONS AND TOLERANCES PER ASME Y14.5M-1994 DIMENSIONS ARE IN MILLIMETERS TOLERANCES APPLY AS SHOWN BELOW				Mechanical CAD 2016	
1 PL DEC ± 0.5 2 PL DEC ± 0.2 3 PL DEC ± 0.1 4 PL DEC ± 0.05 ANGLES ± .1° SURFACE ROUGHNESS 1.5 µ		PROPRIETARY NO PART OF THIS DOCUMENT MAY BE REPRODUCED, STORED IN A RETRIEVAL SYSTEM, OR TRANSMITTED IN ANY FORM, WITHOUT THE WRITTEN PERMISSION OF Skills Ontario		TITLE BASE DETAIL	
THIRD ANGLE PROJECTION		CUSTOMER	DATE	SIZE	DRAWING NO
		PROJECT	DATE	B	
		DRAWN BY	DATE	SCALE	WEIGHT
		CHECKED BY	DATE	1:4	lbs
		APPROVED	DATE		
				SHEET 1 OF 10	