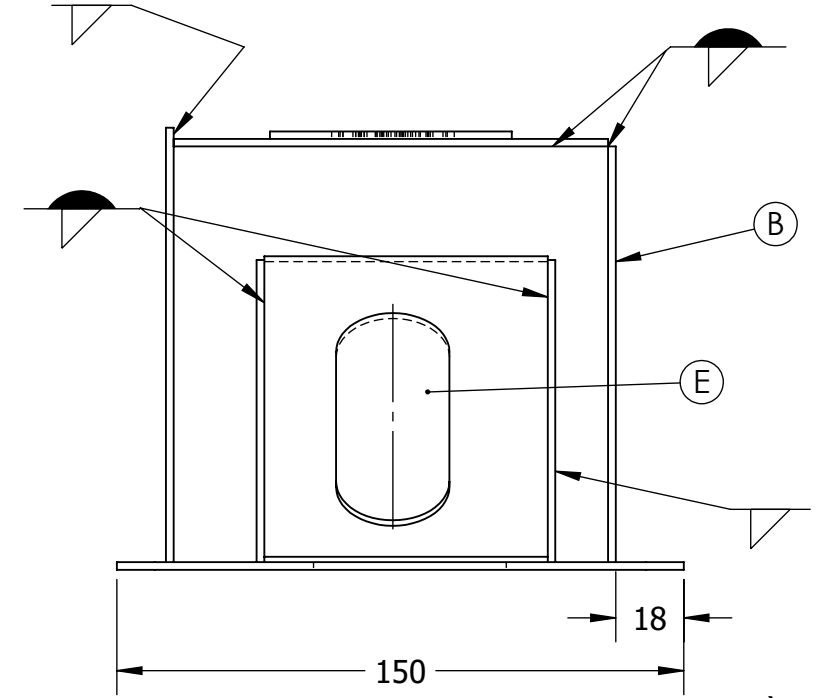
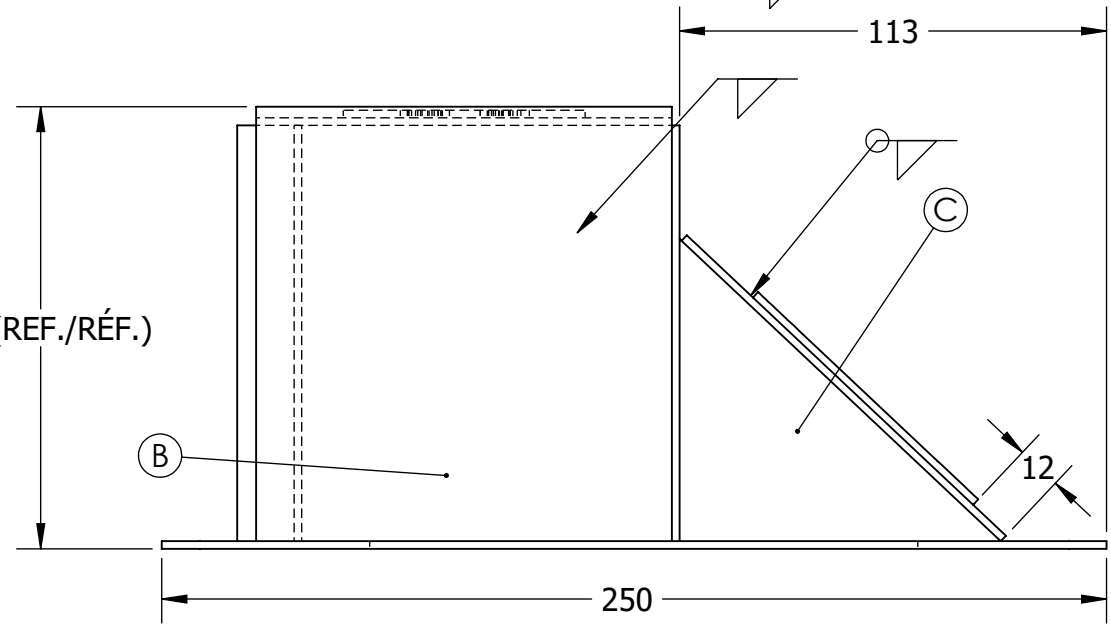
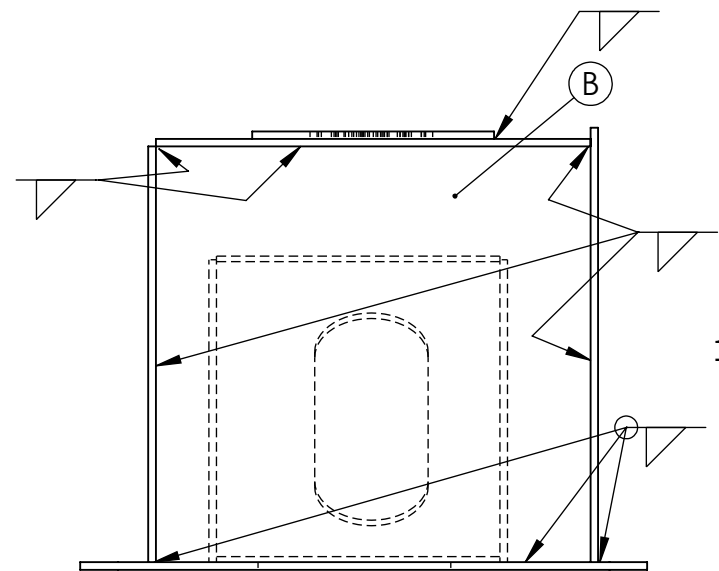
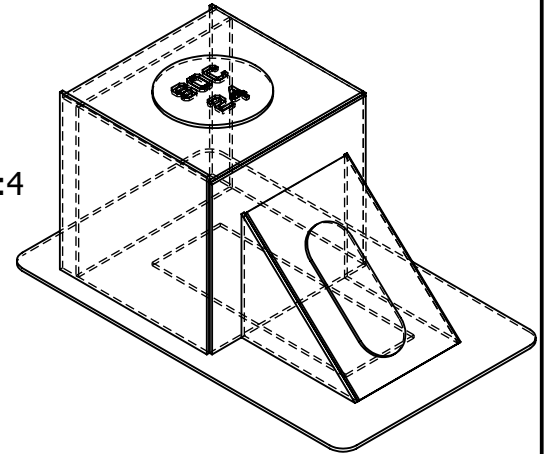
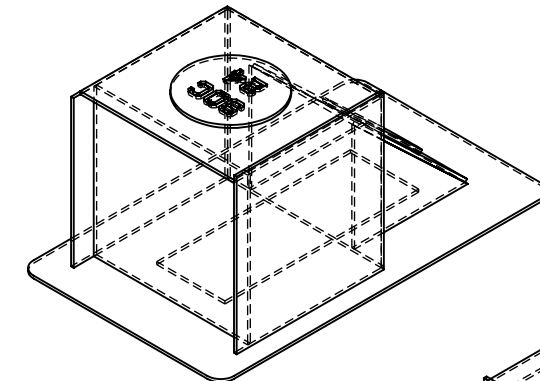
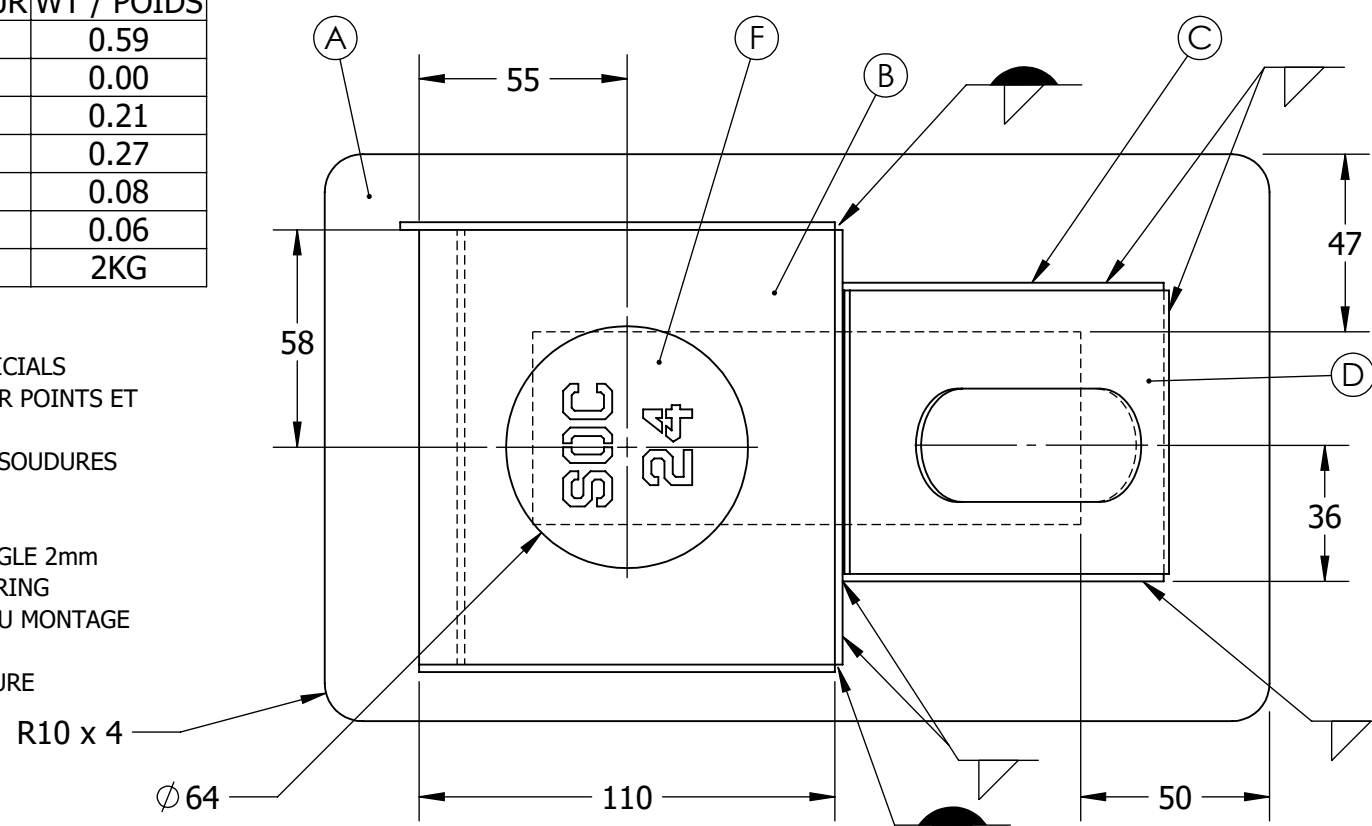


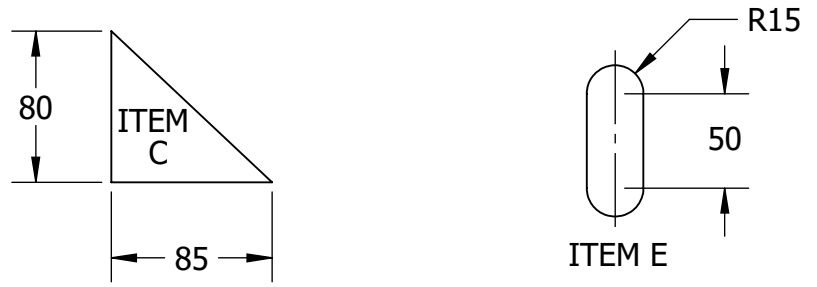
ITEM	QTY / QTÉ	T / ÉP.	W / LARGEUR	L / LONGUEUR	WT / POIDS
A	1	2.00	150	250	0.59
B	5	2.00	110	115	0.00
C	2	2.00	80	85	0.21
D	2	2.00	75	116	0.27
E	2	2.00	30	80	0.08
F	1	2.00	64	64	0.06
TOTAL					2KG

NOTES / REMARQUES:

- ASSEMBLIES MUST BE TACKED AND SIGNED OFF BY OFFICIALS BEFORE WELDING / ASSEMBLAGE DOIT ÊTRE SOUDÉ PAR POINTS ET APPROUVÉ PAR UN REPRÉSENTANT AVANT LA SOUDURE
- ALL VERTICAL WELDING IS VERTICAL UP / TOUTES LES SOUDURES VERTICALES SONT EN SOUDAGE VERTICAL MONTANT
- ALL WELDING GTAW / TOUT SOUDAGE GTAW
- ALL FILLET WELDS 2mm / TOUTES LES SOUDURES D'ANGLE 2mm
- BASE PLATE A FLAT AND ON BOTTOM OF ASSEMBLY DURING WELDING / PLAQUE DE BASE À PLAT ET SUR LE FOND DU MONTAGE PENDANT SOUDAGE
- NO AUTOGENOUS WELDING ALLOWED / AUCUNE SOUDURE AUTOGÈNE AUTORISÉE



PART DETAILS, SCALE 1:4 /
DETAILS DES PIÈCES, ÉCHELLE 1:4



ALL DIMENSIONS IN MILLIMETERS/TOUTES LES DIMENSIONS SONT EN MILLIMÈTRES



TITLE / TITRE: SKILLS COMPÉTENCES ONTARIO 2024 POST-SECONDARY / POST-SECONDAIRE STAINLESS STEEL / ACIER INOXYDABLE		SHEET # NO. DE PAGE: 1 OF 1	SIZE / TAILLE: B
DWG. NO./NO DESSIN: SOC2024-PS2	REV.: 0	SCALE ÉCHELLE: 1:2	DRAWN BY / DESSINÉ PAR: J. HYDE DATE: 2023-01-30

