

4

3

2

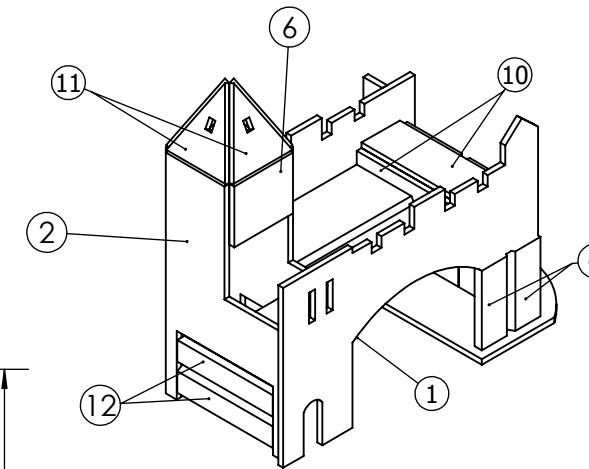
1

NOTE:

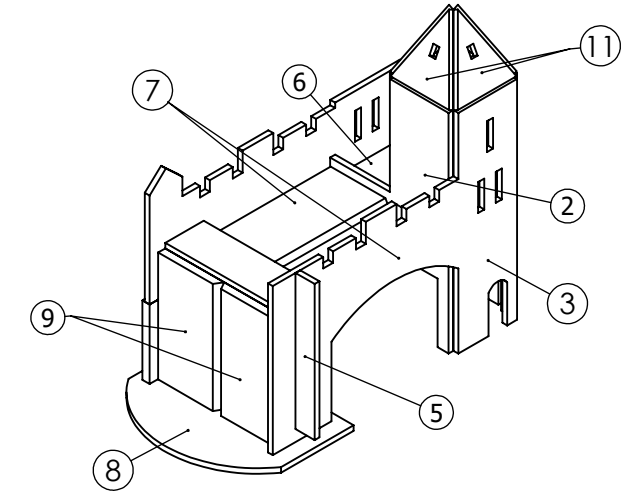
- 1. ALL WELDING TO BE COMPLETED WITH BASE PLATE "A" IN THE FLAT POSITION
- 2. ASSEMBLY MUST BE TACKED (WITH ANY WELDING PROCESS) AND SIGNED OFF BY AN OFFICIAL BEFORE WELDING
- 3. ALL SMAW USE E4918, ALL GMAW USE ER49S-6
- 4. ALL VERTICAL WELDING TO BE DONE IN UPHILL PROGRESSION
- 5. READ ALL NOTES ON ALL SHEETS FOR FUTHER, IMPORTANT INSTRUCTIONS

REMARQUES:

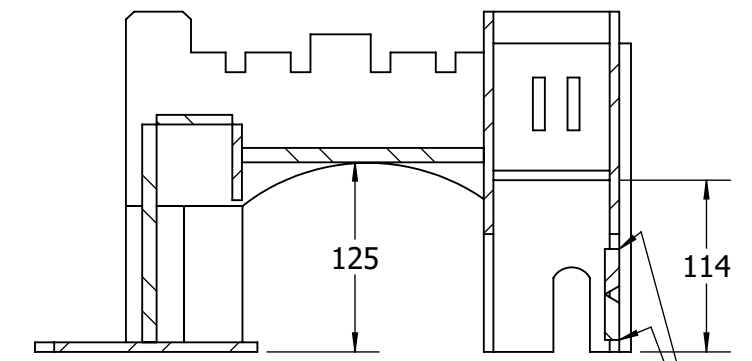
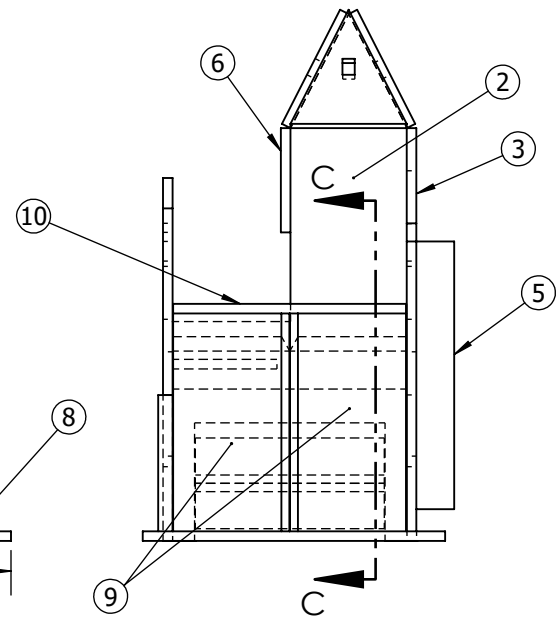
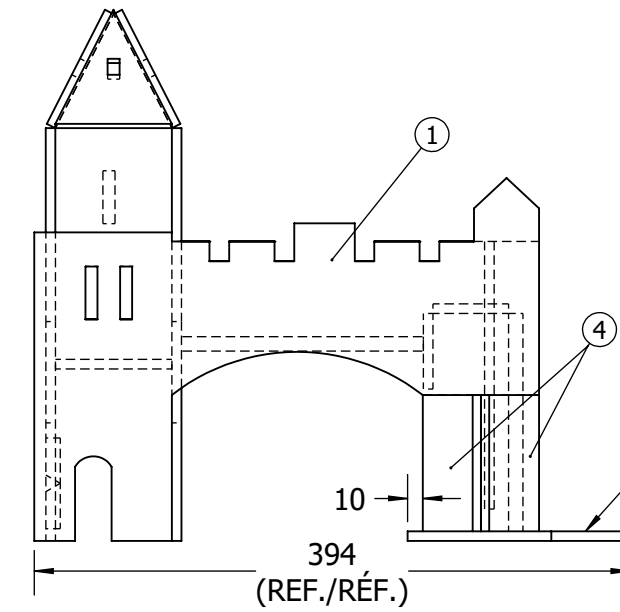
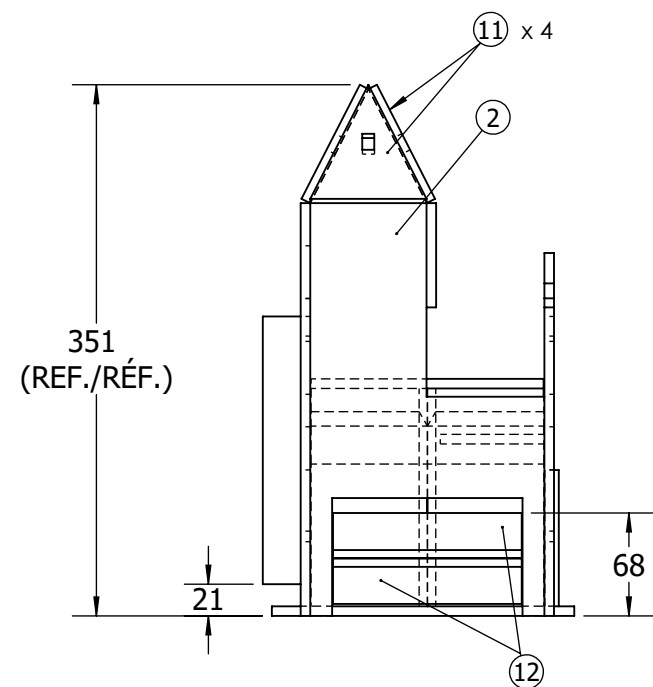
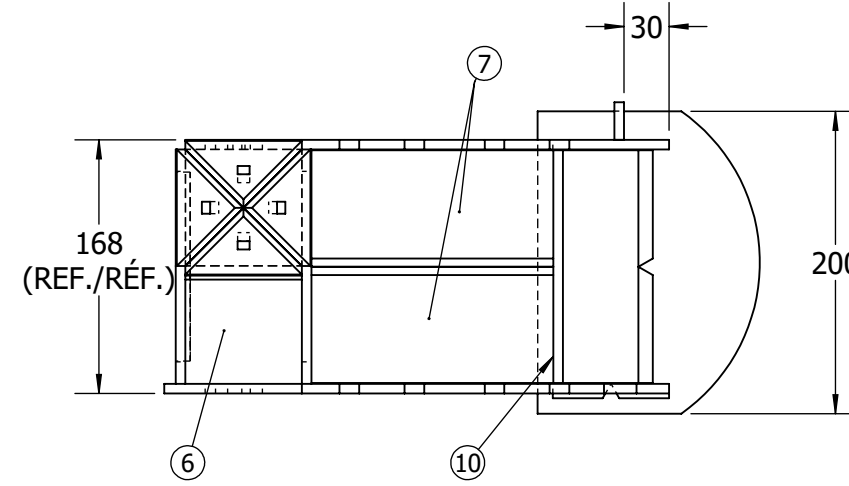
- 1. TOUTES LES SOUDURES DE LA PLAQUE DE BASE "A" DOIVENT ÊTRE EFFECTUÉES EN POSITION À PLAT
- 2. ASSEMBLAGE DOIT ÊTRE SOUDÉ PAR POINTS (AVEC TOUT PROCÉDÉ DE SOUDAGE) ET APPROUVÉ PAR UN REPRÉSENTANT AVANT LA SOUDURE
- 3. TOUS LES SMAW UTILISENT E4918, TOUS LES GMAW UTILISENT ER49S-6
- 4. TOUTES LES SOUDURES VERTICALES SONT EN SOUDAGE VERTICAL MONTANT
- 5. LISEZ TOUTES LES NOTES SUR TOUTES LES FEUILLES CONCERNANT LES INSTRUCTIONS IMPORTANTES



ISOMETRIC VIEW A / VUE ISOMÉTRIQUE A SCALE/ÉCHELLE 1 : 7



ISOMETRIC VIEW B / VUE ISOMÉTRIQUE B SCALE / ÉCHELLE 1:7



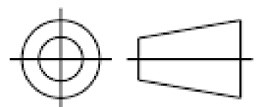
SECTION C-C

ITEM 12 FLUSH TO ITEM 2 /ARTICLE #12 FLUSH À L'ARTICLE #2

ALL DIMENSIONS IN MILLIMETERS/TOUTES LES DIMENSIONS SONT EN MILLIMÈTRES



TITLE/TITRE: SKILLS COMPÉTENCES ONTARIO 2024 SECONDARY / SECONDAIRE PORTE SAINT-LOUIS		SHEET # NO. DE PAGE: 1 OF 3	SIZE / TAILLE: B
DWG. NO. / NO DESSIN: SOC2024-S1	REV.: 0	SCALE ÉCHELLE: 1:5	DRAWN BY / DESSINÉ PAR: J. HYDE DATE: 2023-01-30



4

3

2

1

B

B

A

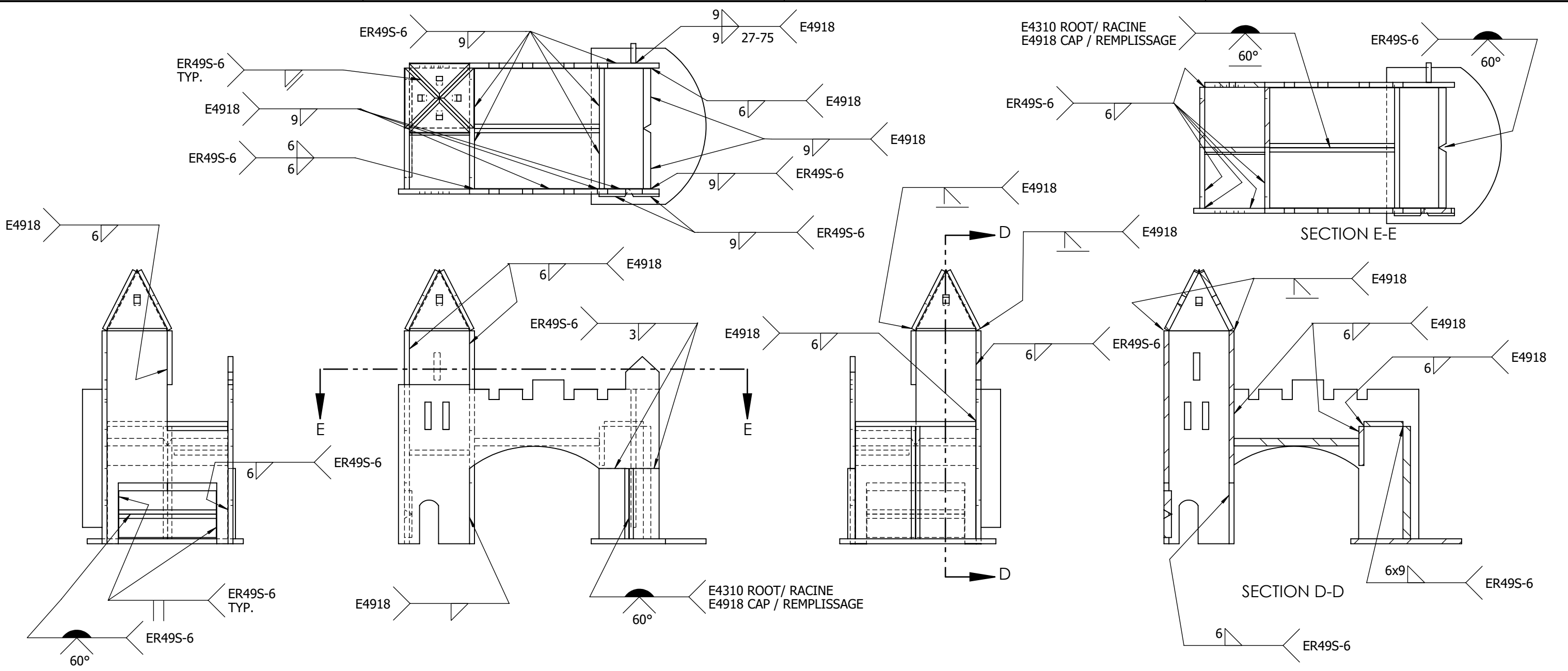
A

4

3

2

1



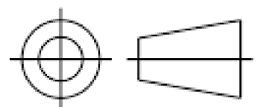
- NOTE:**
1. ALL WELDING TO BE COMPLETED WITH BASE PLATE "A" IN THE FLAT POSITION
 2. ASSEMBLY MUST BE TACKED (WITH ANY WELDING PROCESS) AND SIGNED OFF BY AN OFFICIAL BEFORE WELDING
 3. ALL SMAW USE E4918, ALL GMAW USE ER49S-6
 4. ALL VERTICAL WELDING TO BE DONE IN UPHILL PROGRESSION
 5. READ ALL NOTES ON ALL SHEETS FOR FUTHER, IMPORTANT INSTRUCTIONS

- REMARQUES:**
1. TOUTES LES SOUDURES DE LA PLAQUE DE BASE "A" DOIVENT ÊTRE EFFECTUÉES EN POSITION À PLAT
 2. ASSEMBLAGE DOIT ÊTRE SOUDÉ PAR POINTS (AVEC TOUT PROCÉDÉ DE SOUDAGE) ET APPROUVÉ PAR UN REPRÉSENTANT AVANT LA SOUDURE
 3. TOUS LES SMAW UTILISENT E4918, TOUS LES GMAW UTILISENT ER49S-6
 4. TOUTES LES SOUDURES VERTICALES SONT EN SOUDAGE VERTICAL MONTANT
 5. LISEZ TOUTES LES NOTES SUR TOUTES LES FEUILLES CONCERNANT LES INSTRUCTIONS IMPORTANTES

ALL DIMENSIONS IN MILLIMETERS/TOUTES LES DIMENSIONS SONT EN MILLIMÈTRES



TITLE/TITRE: SKILLS COMPÉTENCES ONTARIO 2024 SECONDARY / SECONDAIRE PORTE SAINT-LOUIS		SHEET # NO. DE PAGE: 2 OF 3	SIZE / TAILLE: B
DWG. NO. / NO DESSIN: SOC2024-S1	REV.: 0	SCALE ÉCHELLE: 1:5	DRAWN BY / DESSINÉ PAR: J. HYDE DATE: 2023-01-30



4

3

2

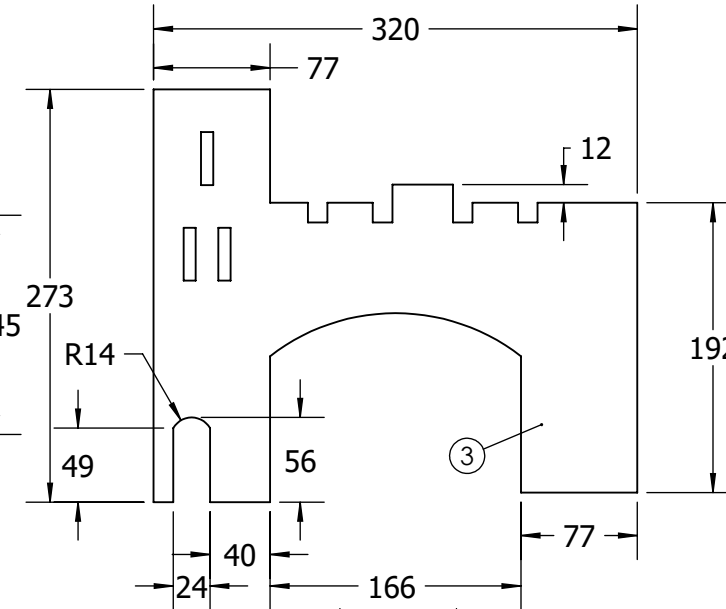
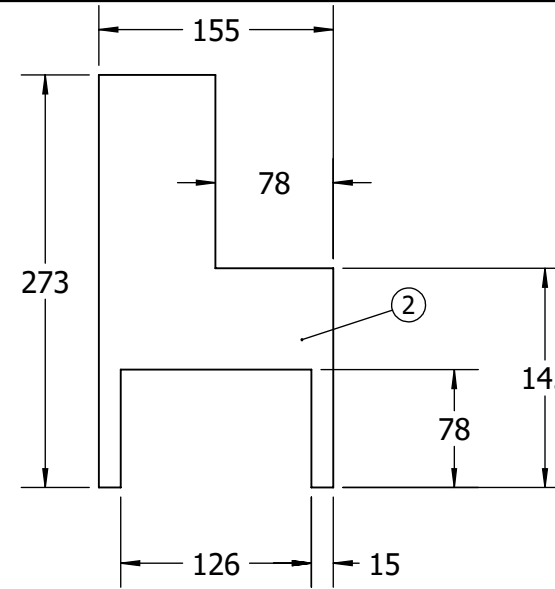
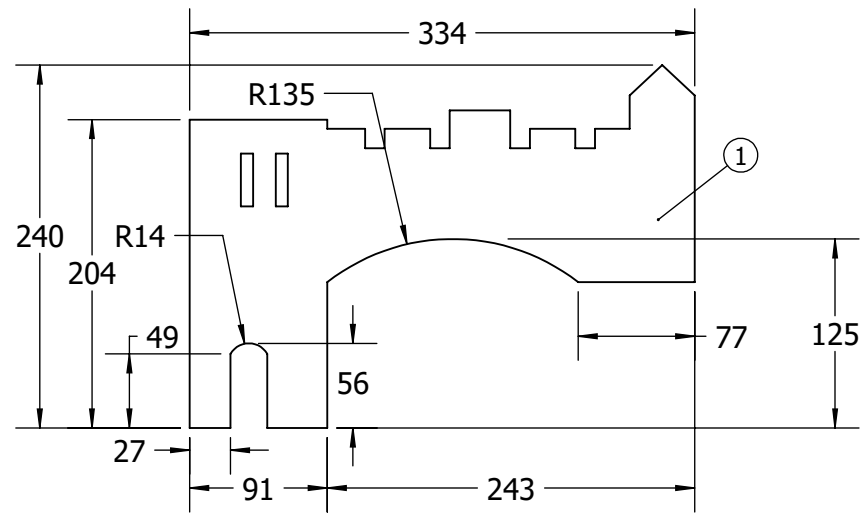
1

4

3

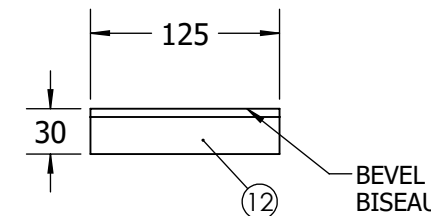
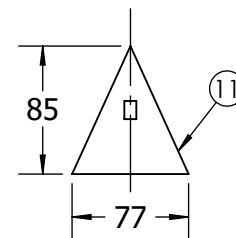
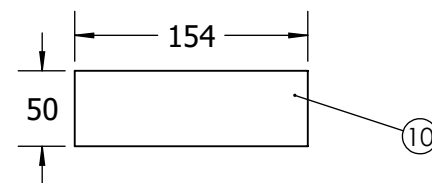
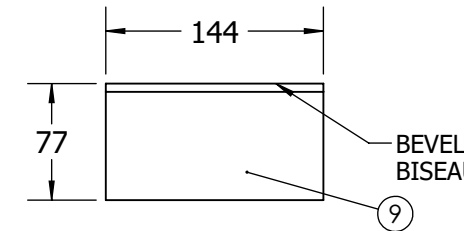
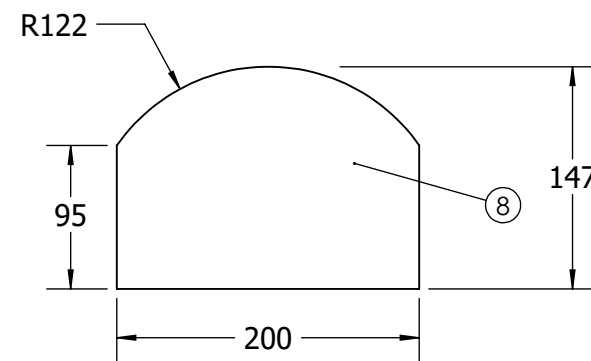
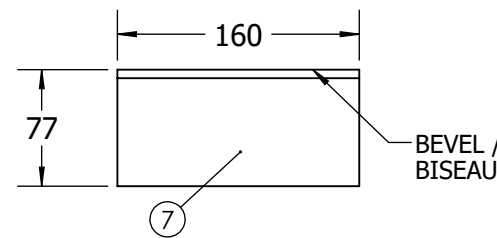
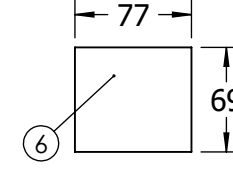
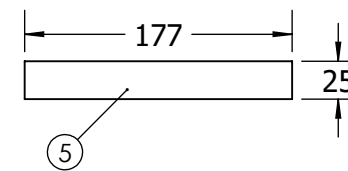
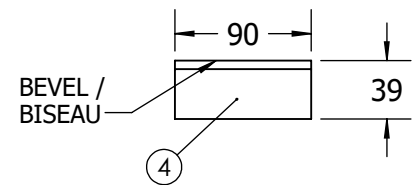
2

1



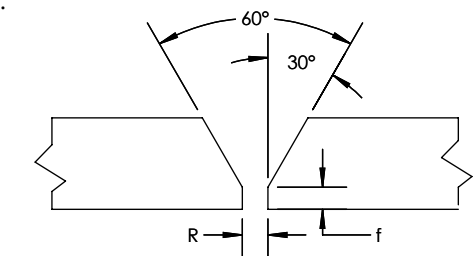
ITEM / ARTICLE	DESCRIPTION	QTY./QTÉ
1	P 6.35 x 240 x 334	1
2	P 6.35 x 155 x 273	2
3	P 6.35 x 273 x 320	1
4	P 9.53 x 39 x 90*	2
5	P 6.35 x 25 x 177	1
6	P 6.35 x 69 x 77	2
7	P 9.53 x 77 x 160*	2
8	P 6.35 x 147 x 200	1
9	P 9.53 x 77 x 144*	2
10	P 6.35 x 50 x 154	2
11	P 6.35 x 77 x 85	4
12	P 9.53 x 30 x 125*	2

TOTAL ESTIMATED WEIGHT, BEFORE WELDING/
POIDS TOTAL ESTIMÉ, AVANT SOUDAGE: 14.3 KG



PREPARED GROOVE DIMENSIONS / DIMENSIONS DES RAINURES PRÉPARÉES

* = ALL BEVEL AND VEE PREPARATIONS AS FOLLOWS:
* = PRÉPARER TOUTES LES SOUDURES EN V ET EN BISEAU COMME
CECI :

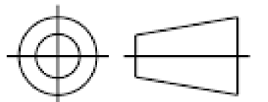


R and **f** are prepared to the preference of the competitor.
The dimension for the plates shown is to a feathered edge and
any root gap must be accommodated in overall fitting dimensions.
R et **f** sont préparés selon les préférences du concurrent ou de la
concurrente. Les dimensions des plaques présentées tiennent
compte d'un rebord aminci et tout espacement des racines doit
être pris en compte dans l'ensemble des dimensions
d'assemblage.

ALL DIMENSIONS IN MILLIMETERS/TOUTES LES DIMENSIONS SONT EN MILLIMÈTRES



TITLE/TITRE:		SHEET #		SIZE /
SKILLS COMPÉTENCES ONTARIO 2024 SECONDARY / SECONDAIRE PORTE SAINT-LOUIS		NO. DE PAGE:		TAILLE:
		3 OF 3		B
DWG. NO. / NO DESSIN:	REV.:	SCALE ÉCHELLE:	DRAWN BY / DESSINÉ PAR:	
SOC2024-S1	0	1:5	J. HYDE	
			DATE:	
			2023-01-30	



4

3

2

1

